

Anti-YWHAB-Ser310 antibody (STJA0003833)

STJA0003833

GENERAL INFORMATION

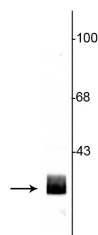
Product Type	Primary antibodies
Short Description	Rabbit polyclonal antibody anti-XIRP1-Ser310 is suitable for use in Western Blot research applications.
Applications	WB
Host/Source	Rabbit
Reactivity	Rat/Bovine/Canine/Chicken/Human/Mouse/Non-Human Primates/Xenopus/Zebrafish

PRODUCT PROPERTIES

Clonality	Polyclonal
Clone ID	
Concentration	
Conjugation	Unconjugated
Purification	This antibody was antigen affinity purified from pooled serum.
Dilution Range	WB 1:1000
Formulation	IHC Not recommended for use in paraffin sections 100 µl in 10 mM HEPES (pH 7.5) , 150 mM NaCl, 100 µg per ml BSA and 50% Glycerol.
Isotype	IgG
Storage Instruction	Store at -20°C for up to 1 year from the date of receipt, and avoid repeat freeze-thaw cycles.

TARGET INFORMATION

Gene ID	56011
Gene Symbol	Ywhab
Uniprot ID	1433B_RAT
Immunogen	Synthetic phospho-peptide corresponding to amino acid residues surrounding Ser310 conjugated to KLH of mouse species
Immunogen Region	
Specificity	
Immunogen Sequence	



Western blot of rat hippocampal lysate showing specific immunolabeling of the ~29 kDa 14-3-3 protein.

This product is suitable for in-vitro studies under the RESEARCH USE ONLY [RUO] licence. This product must not be used as for diagnostic or other medical purposes.
St John's Laboratory Ltd, Knowledge Dock Business Centre, University Way, London, E16 2RD | Tel: 0208 223 3081