

## Anti-EWSR1 antibody (Full Length) [5H7] (STJA0003830)

STJA0003830

### GENERAL INFORMATION

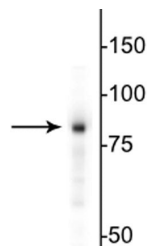
<b>Product Type</b>	Primary antibodies
<b>Short Description</b>	Mouse monoclonal antibody anti-EWS (Full Length) is suitable for use in Western Blot, Immunohistochemistry and Immunocytochemistry research applications.
<b>Applications</b>	WB/IHC/ICC
<b>Host/Source</b>	Mouse
<b>Reactivity</b>	Canine/Human/Mouse/Rat

### PRODUCT PROPERTIES

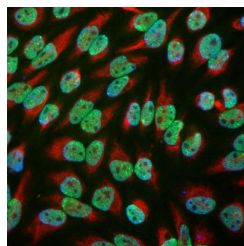
<b>Clonality</b>	Monoclonal
<b>Clone ID</b>	5H7
<b>Concentration</b>	
<b>Conjugation</b>	Unconjugated
<b>Purification</b>	This antibody was protein g purified culture from supernatant.
<b>Dilution Range</b>	WB 1:1000 IHC 1:1000 ICC 1:1000
<b>Formulation</b>	100 ul in PBS + 50% Glycerol and 5 mM Sodium Azide
<b>Isotype</b>	IgG2b
<b>Storage Instruction</b>	Store at -20°C for up to 1 year from the date of receipt, and avoid repeat freeze-thaw cycles.

### TARGET INFORMATION

<b>Gene ID</b>	2130
<b>Gene Symbol</b>	EWSR1
<b>Uniprot ID</b>	EWS_HUMAN
<b>Immunogen</b>	full length recombinant human EWS expressed in and purified from E. coli. of human species
<b>Immunogen Region</b>	Full Length
<b>Specificity</b>	
<b>Immunogen Sequence</b>	



Western blot of HeLa cell lysate showing specific immunolabeling of the ~85 kDa EWS protein.



Immunofluorescence of HeLa cells showing clear localized labeling of the DNA in the nucleus with Anti-EWS (STJA0003830, 1:1000, green) while Anti-Vimentin (STJA0003823, 1:5000, red) labels the cytoplasmic intermediate filament, and Hoechst DNA stain (blue).