

## Anti-UCHL1 antibody (Full Length) [BH7] (STJA0003820)

STJA0003820

### GENERAL INFORMATION

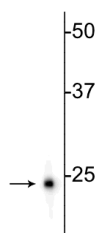
<b>Product Type</b>	Primary antibodies
<b>Short Description</b>	Mouse monoclonal antibody anti-UCHL1 (Full Length) is suitable for use in Western Blot, Immunohistochemistry and Immunocytochemistry research applications.
<b>Applications</b>	WB/IHC/ICC
<b>Host/Source</b>	Mouse
<b>Reactivity</b>	Bovine/Human/Mouse/Pig/Rat/Canine/Feline/Goat/Guinea Pig/Hamster/Horse/Non-Human Primates/Rabbit/Sheep/Vole

### PRODUCT PROPERTIES

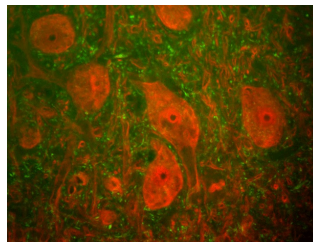
<b>Clonality</b>	Monoclonal
<b>Clone ID</b>	BH7
<b>Concentration</b>	
<b>Conjugation</b>	Unconjugated
<b>Purification</b>	This antibody was protein g purified culture from supernatant.
<b>Dilution Range</b>	WB 1:5000 IHC 1:500-1:5000 ICC 1:500-1:2000
<b>Formulation</b>	100 ul in PBS + 50% Glycerol and 5 mm Sodium Azide
<b>Isotype</b>	IgG1
<b>Storage Instruction</b>	Store at -20°C for up to 1 year from the date of receipt, and avoid repeat freeze-thaw cycles.

### TARGET INFORMATION

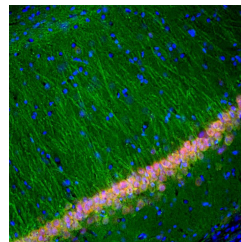
<b>Gene ID</b>	7345
<b>Gene Symbol</b>	UCHL1
<b>Uniprot ID</b>	UCHL1_HUMAN
<b>Immunogen</b>	Recombinant full length human UCHL1 purification from E. coli.
<b>Immunogen Region</b>	Full Length
<b>Specificity</b>	
<b>Immunogen Sequence</b>	



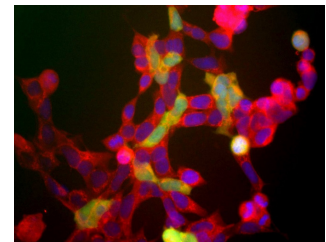
Western blot of rat hippocampal homogenate showing specific immunolabeling of the ~24 kDa UCHL1 protein.



Immunofluorescence of a section of rat spinal cord labeled with anti-UCHL1 (STJA0003820, 1:500, red) and anti-Neurofilament H (cat. STJA0003698, 1:25,000, green). The large cells are alpha-motoneurons and UCHL1 fills the cytoplasm of their perikarya and dendrites.



Immunofluorescence of a section of rat hippocampus showing specific labeling of UCHL1 (STJA0003820, 1:5000, green) in cell bodies and dendrites of neurons, and specific labeling of FOX3 (red). The blue is DAPI staining of nuclear DNA.



Immunolabeling of HEK 293 cells labeled with anti-UCHL1 antibody (STJA0003820, green, 1:500) and anti-neuron specific enolase antibody (1520-NSE, red, 1:500). The blue is staining nuclear DNA.