

Anti-TUBB3 antibody [AA10] (STJA0003815)

STJA0003815

GENERAL INFORMATION

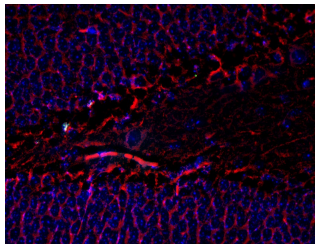
Product Type	Primary antibodies
Short Description	Mouse monoclonal antibody anti-Tubulin beta III is suitable for use in Western Blot, Immunohistochemistry and Immunocytochemistry research applications.
Applications	WB/IHC/ICC
Host/Source	Mouse
Reactivity	Mouse/Rat/Bovine/Canine/Feline/Goat/Guinea Pig/Hamster/Horse/Human/Non-Human Primates/Rabbit/Sheep/Vole

PRODUCT PROPERTIES

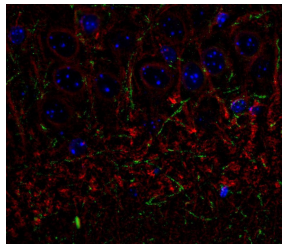
Clonality	Monoclonal
Clone ID	AA10
Concentration	
Conjugation	Unconjugated
Purification	This antibody was protein g purified culture from supernatant.
Dilution Range	WB 1:10000 IHC 1:1000
Formulation	100 µl in 10 mM HEPES (pH 7.5) , 150 mM NaCl, 100 µg per ml BSA and 50% Glycerol.
Isotype	IgG
Storage	Store at -20°C for up to 1 year from the date of receipt, and avoid repeat freeze-thaw cycles.
Instruction	

TARGET INFORMATION

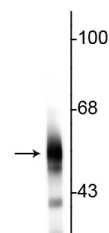
Gene ID	246118
Gene Symbol	Tubb3
Uniprot ID	TBB3_RAT
Immunogen	Synthetic peptide corresponding to amino acid residues specific to beta III tubulin conjugated to KLH.
Immunogen Region	
Specificity	
Immunogen Sequence	



Immunostaining of mouse dentate gyrus showing beta III tubulin (red, 1:1000). The blue is staining nuclei. Photo courtesy of Robert Wine.



Immunolabeling of the CA3 subfield of mouse hippocampus labeling Beta-III tubulin (STJA0003815, 1:1000, red) and CNP (325-CNP, green, 1:500). The blue is DAPI staining DNA. Photo courtesy of Rob Wine.



Western blot of rat cortical lysate showing specific immunolabeling of the ~55 kDa beta III tubulin protein.

This product is suitable for in-vitro studies under the RESEARCH USE ONLY [RUO] licence. This product must not be used as for diagnostic or other medical purposes.
St John's Laboratory Ltd, Knowledge Dock Business Centre, University Way, London, E16 2RD | Tel: 0208 223 3081