

Anti-Phospho-TPH2-Ser19 antibody (STJA0003812)

STJA0003812

GENERAL INFORMATION

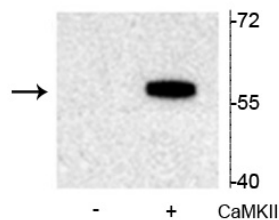
Product Type	Primary antibodies
Short Description	Rabbit polyclonal antibody anti-Phospho-Tryptophan Hydroxylase-Ser19 is suitable for use in Western Blot research applications.
Applications	WB
Host/Source	Rabbit
Reactivity	Mouse/Rat/Bovine/Zebrafish

PRODUCT PROPERTIES

Clonality	Polyclonal
Clone ID	
Concentration	
Conjugation	Unconjugated
Purification	This antibody was antigen affinity purified from pooled serum.
Dilution Range	WB 1:1000
Formulation	100 µl in 10 mM HEPES (pH 7.5) , 150 mM NaCl, 100 µg per ml BSA and 50% Glycerol.
Isotype	IgG
Storage Instruction	Store at -20°C for up to 1 year from the date of receipt, and avoid repeat freeze-thaw cycles.

TARGET INFORMATION

Gene ID	317675
Gene Symbol	Tph2
Uniprot ID	TPH2_RAT
Immunogen	Synthetic phospho-peptide corresponding to amino acid residues surrounding Ser19 conjugated to KLH.
Immunogen Region	
Specificity	
Immunogen Sequence	



Western blot of recombinant tryptophan hydroxylase incubated in the absence (-) and presence (+) of Ca²⁺/calmodulin dependent kinase II showing specific immunolabeling of the ~55 kDa tryptophan hydroxylase protein phosphorylated at Ser19.

This product is suitable for in-vitro studies under the RESEARCH USE ONLY [RUO] licence. This product must not be used as for diagnostic or other medical purposes.
St John's Laboratory Ltd, Knowledge Dock Business Centre, University Way, London, E16 2RD | Tel: 0208 223 3081