

## Anti-Phospho-TNNI3-Ser43 antibody (STJA0003810)

STJA0003810

### GENERAL INFORMATION

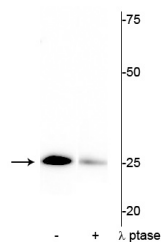
|                          |   |
|--------------------------|---|
| <b>Product Type</b>      | Primary antibodies  |
| <b>Short Description</b> | Rabbit polyclonal antibody anti-Phospho-Cardiac Troponin I-Ser43 is suitable for use in Western Blot research applications. |
| <b>Applications</b>      | WB  |
| <b>Host/Source</b>       | Rabbit  |
| <b>Reactivity</b>        | Human/Mouse/Rat/Bovine/Canine/Non-Human Primates/Sheep/Xenopus/Zebrafish  |

### PRODUCT PROPERTIES

|                            |  |
|----------------------------|--|
| <b>Clonality</b>           | Polyclonal   |
| <b>Clone ID</b>            |  |
| <b>Concentration</b>       |  |
| <b>Conjugation</b>         | Unconjugated   |
| <b>Purification</b>        | This antibody was antigen affinity purified from pooled serum.                                 |
| <b>Dilution Range</b>      | WB 1:1000  |
| <b>Formulation</b>         | 100 µl in 10 mM HEPES (pH 7.5) , 150 mM NaCl, 100 µg per ml BSA and 50% Glycerol.              |
| <b>Isotype</b>             | IgG  |
| <b>Storage Instruction</b> | Store at -20°C for up to 1 year from the date of receipt, and avoid repeat freeze-thaw cycles. |

### TARGET INFORMATION

|                           |   |
|---------------------------|---|
| <b>Gene ID</b>            | <a href="#">21954</a>   |
| <b>Gene Symbol</b>        | <a href="#">Tnni3</a>   |
| <b>Uniprot ID</b>         | <a href="#">TNNI3_MOUSE</a>   |
| <b>Immunogen</b>          | Synthetic phospho-peptide corresponding to amino acid residues surrounding Ser43 conjugated to KLH. |
| <b>Immunogen Region</b>   |   |
| <b>Specificity</b>        |   |
| <b>Immunogen Sequence</b> |   |



Western blot of mouse heart lysate showing specific immunolabeling of the ~25 kDa cardiac troponin I protein phosphorylated at Ser43 in the first lane (-). Phosphospecificity is shown in the second lane (+) where the immunolabeling is greatly decreased by blot treatment with lambda phosphatase ( Lambda-Phase, 1200 units for 30 minutes).

This product is suitable for in-vitro studies under the RESEARCH USE ONLY [RUO] licence. This product must not be used as for diagnostic or other medical purposes.  
St John's Laboratory Ltd, Knowledge Dock Business Centre, University Way, London, E16 2RD | Tel: 0208 223 3081