

Anti-Phospho-SYT1-Ser309 antibody (STJA0003792)

STJA0003792

GENERAL INFORMATION

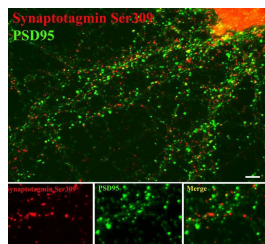
Product Type	Primary antibodies
Short Description	Rabbit polyclonal antibody anti-Phospho-Synaptotagmin-Ser309 is suitable for use in Western Blot and Immunocytochemistry research applications.
Applications	WB/ICC
Host/Source	Rabbit
Reactivity	Rat/Bovine/Canine/Chicken/Human/Non-Human Primates/Mouse/Zebrafish

PRODUCT PROPERTIES

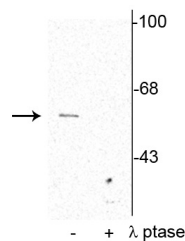
Clonality	Polyclonal
Clone ID	
Concentration	
Conjugation	Unconjugated
Purification	This antibody was antigen affinity purified from pooled serum.
Dilution Range	WB 1:1000 ICC 1:400
Formulation	100 µl in 10 mM HEPES (pH 7.5) , 150 mM NaCl, 100 µg per ml BSA and 50% Glycerol.
Isotype	IgG
Storage	Store at -20°C for up to 1 year from the date of receipt, and avoid repeat freeze-thaw cycles.
Instruction	

TARGET INFORMATION

Gene ID	25716
Gene Symbol	Syt1
Uniprot ID	SYT1_RAT
Immunogen	Synthetic phospho-peptide corresponding to amino acid residues surrounding Ser309 conjugated to KLH.
Immunogen Region	
Specificity	
Immunogen Sequence	



Immunostaining of 14 DIV rat cortical neurons showing synaptotagmin when phosphorylated at Ser309 in red and PSD95 in green. Photo courtesy of Gang Liu.



Western blot of rat cortical lysate showing specific immunolabeling of the ~62 kDa synaptotagmin phosphorylated at Thr202 in the first lane (-). Phosphospecificity is shown in the second lane (+) where the immunolabeling is completely eliminated by blot treatment with lambda phosphatase (Lambda-Phase, 1200 units for 30 minutes).