

Anti-Phospho-RPS6-Ser244 antibody (STJA0003772)

STJA0003772

GENERAL INFORMATION

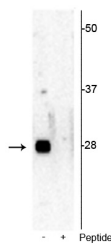
Product Type	Primary antibodies
Short Description	Rabbit polyclonal antibody anti-Phospho-Ribosomal protein S6-Ser244 is suitable for use in Western Blot research applications.
Applications	WB
Host/Source	Rabbit
Reactivity	Human/Mouse/Chicken/Goat/Non-Human Primates/Rat/Xenopus/Zebrafish

PRODUCT PROPERTIES

Clonality	Polyclonal
Clone ID	
Concentration	
Conjugation	Unconjugated
Purification	This antibody was antigen affinity purified from pooled serum.
Dilution Range	WB 1:500
Formulation	100 µl in 10 mM HEPES (pH 7.5) , 150 mM NaCl, 100 µg per ml BSA and 50% Glycerol.
Isotype	IgG
Storage Instruction	Store at -20°C for up to 1 year from the date of receipt, and avoid repeat freeze-thaw cycles.

TARGET INFORMATION

Gene ID	20104
Gene Symbol	Rps6
Uniprot ID	RS6_MOUSE
Immunogen	Synthetic phospho-peptide corresponding to amino acid residues surrounding Ser244 conjugated to KLH.
Immunogen Region	
Specificity	
Immunogen Sequence	



Western blot of Jurkat cell lysate showing specific immunolabeling of the ~28 kDa rpS6 phosphorylated at Ser244 in the first lane (-). Phosphospecificity is shown in the second lane (+) where immunolabeling is blocked by preadsorption of the phosphopeptide used as antigen, but not by the corresponding non-phosphopeptide (not shown).

This product is suitable for in-vitro studies under the RESEARCH USE ONLY [RUO] licence. This product must not be used as for diagnostic or other medical purposes.
St John's Laboratory Ltd, Knowledge Dock Business Centre, University Way, London, E16 2RD | Tel: 0208 223 3081