

## Anti-Phospho-RPH3A-Ser234 antibody (STJA0003761)

STJA0003761

### GENERAL INFORMATION

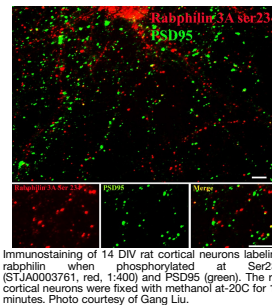
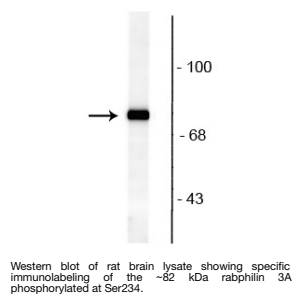
<b>Product Type</b>	Primary antibodies
<b>Short Description</b>	Rabbit polyclonal antibody anti-Phospho-Rabphilin 3A-Ser234 is suitable for use in Western Blot and Immunocytochemistry research applications.
<b>Applications</b>	WB/ICC
<b>Host/Source</b>	Rabbit
<b>Reactivity</b>	Rat/Mouse

### PRODUCT PROPERTIES

<b>Clonality</b>	Polyclonal
<b>Clone ID</b>	
<b>Concentration</b>	
<b>Conjugation</b>	Unconjugated
<b>Purification</b>	This antibody was antigen affinity purified from pooled serum.
<b>Dilution Range</b>	WB 1:1000 ICC 1:400
<b>Formulation</b>	100 µl in 10 mM HEPES (pH 7.5) , 150 mM NaCl, 100 µg per ml BSA and 50% Glycerol.
<b>Isotype</b>	IgG
<b>Storage Instruction</b>	Store at -20°C for up to 1 year from the date of receipt, and avoid repeat freeze-thaw cycles.

### TARGET INFORMATION

<b>Gene ID</b>	171039
<b>Gene Symbol</b>	Rph3a
<b>Uniprot ID</b>	RP3A_RAT
<b>Immunogen</b>	Synthetic phospho-peptide corresponding to amino acid residues surrounding Ser234 conjugated to KLH.
<b>Immunogen</b>	
<b>Region</b>	
<b>Specificity</b>	
<b>Immunogen</b>	
<b>Sequence</b>	



This product is suitable for in-vitro studies under the RESEARCH USE ONLY [RUO] licence. This product must not be used as for diagnostic or other medical purposes.  
St John's Laboratory Ltd, Knowledge Dock Business Centre, University Way, London, E16 2RD | Tel: 0208 223 3081