

Anti-Phospho-PTPH1-Ser459 antibody (STJA0003758)

STJA0003758

GENERAL INFORMATION

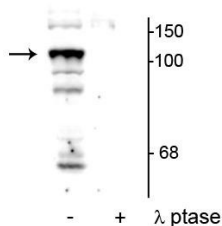
Product Type	Primary antibodies
Short Description	Rabbit polyclonal antibody anti-Phospho-PTPH1-Ser459 is suitable for use in Western Blot research applications.
Applications	WB
Host/Source	Rabbit
Reactivity	Human/Mouse/Bovine/Canine/Non-Human Primates/Sheep

PRODUCT PROPERTIES

Clonality	Polyclonal
Clone ID	
Concentration	
Conjugation	Unconjugated
Purification	This antibody was antigen affinity purified from pooled serum.
Dilution Range	WB 1:1000
Formulation	100 µl in 10 mM HEPES (pH 7.5) , 150 mM NaCl, 100 µg per ml BSA and 50% Glycerol.
Isotype	IgG
Storage Instruction	Store at -20°C for up to 1 year from the date of receipt, and avoid repeat freeze-thaw cycles.

TARGET INFORMATION

Gene ID	5774
Gene Symbol	PTPN3
Uniprot ID	PTN3_HUMAN
Immunogen	Synthetic phospho-peptide corresponding to amino acid residues surrounding Ser459 conjugated to KLH.
Immunogen Region	
Specificity	
Immunogen Sequence	



Western blot of mouse testicular lysate showing specific immunolabeling of the ~104 kDa PTPH1 phosphorylated at Ser459 in the first lane (-). Phosphospecificity is shown in the second lane (+) where the immunolabeling is completely eliminated by lysate treatment with lambda phosphatase (Lambda-Ptase, 400 units/100ul lysate for 30 minutes, RT).

This product is suitable for in-vitro studies under the RESEARCH USE ONLY [RUO] licence. This product must not be used as for diagnostic or other medical purposes.
St John's Laboratory Ltd, Knowledge Dock Business Centre, University Way, London, E16 2RD | Tel: 0208 223 3081