

Anti-Phospho-PGR-Ser190 antibody [1154] (STJA0003755)

STJA0003755

GENERAL INFORMATION

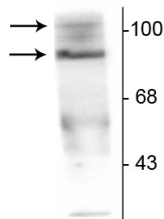
| | |
|--------------------------|---|
| Product Type | Primary antibodies |
| Short Description | Mouse monoclonal antibody anti-Phospho-Progesterone Receptor-Ser190 is suitable for use in Western Blot and Immunohistochemistry research applications. |
| Applications | WB/IHC |
| Host/Source | Mouse |
| Reactivity | Human |

PRODUCT PROPERTIES

| | |
|-----------------------|--|
| Clonality | Monoclonal |
| Clone ID | 1154 |
| Concentration | |
| Conjugation | Unconjugated |
| Purification | This antibody was protein g purified culture from supernatant. |
| Dilution Range | WB 1:1000 IHC 1:1000 |
| Formulation | 100 µl in 10 mM HEPES (pH 7.5) , 150 mM NaCl, 100 µg per ml BSA and 50% Glycerol. |
| Isotype | IgG1 |
| Storage | Store at -20°C for up to 1 year from the date of receipt, and avoid repeat freeze-thaw cycles. |
| Instruction | |

TARGET INFORMATION

| | |
|---------------------------|--|
| Gene ID | 5241 |
| Gene Symbol | PGR |
| Uniprot ID | PRGR_HUMAN |
| Immunogen | Synthetic phospho-peptide corresponding to amino acid residues surrounding Ser190 conjugated to KLH. |
| Immunogen Region | |
| Specificity | |
| Immunogen Sequence | |



Western blot of T47D cell lysate prepared from cells that had been incubated in the presence of the synthetic progestin agonist R5020 (500 nM) showing specific immunolabeling of the ~30 kDa PR-A isoform and the ~120 kDa PR-B isoform of the progesterone receptor phosphorylated at Ser190. The immunolabeling is specifically blocked by the phosphopeptide used as the antigen (not shown).

This product is suitable for in-vitro studies under the RESEARCH USE ONLY [RUO] licence. This product must not be used as for diagnostic or other medical purposes.
St John's Laboratory Ltd, Knowledge Dock Business Centre, University Way, London, E16 2RD | Tel: 0208 223 3081