

Anti-PRPH antibody (STJA0003748)

STJA0003748

GENERAL INFORMATION

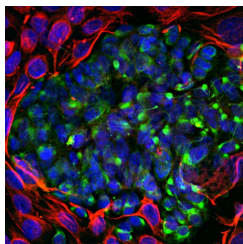
Product Type	Primary antibodies
Short Description	Chicken polyclonal antibody anti-Peripherin is suitable for use in Western Blot, Immunohistochemistry and Immunocytochemistry research applications.
Applications	WB/IHC/ICC
Host/Source	Chicken
Reactivity	Bovine/Human/Mouse/Rat/Canine/Feline/Goat/Guinea Pig/Hamster/Horse/Non-Human Primates/Rabbit/Sheep

PRODUCT PROPERTIES

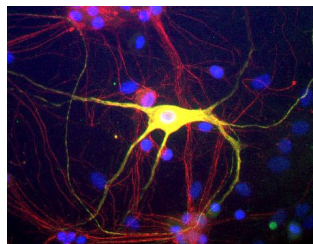
Clonality	Polyclonal
Clone ID	
Concentration	
Conjugation	Unconjugated
Purification	This antibody was total igy fraction.
Dilution Range	WB 1:1000 IHC 1:500-1:2000 ICC 1:500-1:5000
Formulation	Total IgY fraction in PBS + 10 mM Sodium Azide.
Isotype	IgY
Storage	Store at -20°C for up to 1 year from the date of receipt, and avoid repeat freeze-thaw cycles.
Instruction	

TARGET INFORMATION

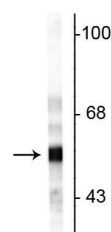
Gene ID	
Gene Symbol	Prph
Uniprot ID	PERL_RAT
Immunogen	Recombinant rat peripherin expressed in and purification from E. coli.
Immunogen	
Region	
Specificity	
Immunogen	
Sequence	



Immunofluorescence of mixed fibroblasts and PC12 cells labeled with anti-peripherin (STJA0003748, green, 1:5000) and anti-vimentin (red). The blue is DAPI staining nuclear DNA. Peripherin is labeled in only the PC12 cells cytoplasmic filaments and vimentin is only labeled in the fibroblasts intermediate filaments where peripherin is not present.



Immunofluorescence of cultured rat neurons and glia showing peripherin (STJA0003748, green, 1:500) and alpha-interneuron (red). The blue stain is nuclear DNA. Cells expressing both peripherin and alpha-interneuron appear yellow.



Western blot of rat cerebellar lysate showing specific immunolabeling of the ~57 kDa peripherin protein.

This product is suitable for in-vitro studies under the RESEARCH USE ONLY [RUO] licence. This product must not be used as for diagnostic or other medical purposes.
St John's Laboratory Ltd, Knowledge Dock Business Centre, University Way, London, E16 2RD | Tel: 0208 223 3081