

Anti-Phospho-PAK1-3-Thr402 antibody (STJA0003739)

STJA0003739

GENERAL INFORMATION

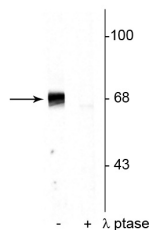
Product Type	Primary antibodies
Short Description	Rabbit polyclonal antibody anti-Phospho-PAK-1, 2, 3-Thr402 is suitable for use in Western Blot research applications.
Applications	WB
Host/Source	Rabbit
Reactivity	Mouse/Rat/Bovine/Canine/Human

PRODUCT PROPERTIES

Clonality	Polyclonal
Clone ID	
Concentration	
Conjugation	Unconjugated
Purification	This antibody was antigen affinity purified from pooled serum.
Dilution Range	WB 1:1000
Formulation	100 µl in 10 mM HEPES (pH 7.5) , 150 mM NaCl, 100 µg per ml BSA and 50% Glycerol.
Isotype	IgG
Storage Instruction	Store at -20°C for up to 1 year from the date of receipt, and avoid repeat freeze-thaw cycles.

TARGET INFORMATION

Gene ID	29431
Gene Symbol	Pak1
Uniprot ID	PAK1_RAT
Immunogen	Synthetic phospho-peptide corresponding to amino acid residues surrounding Thr402 conjugated to KLH.
Immunogen Region	
Specificity	
Immunogen Sequence	



Western blot of rat hippocampal lysate showing specific immunolabeling of the ~68 kDa to ~70 kDa PAK protein phosphorylated at Ser402 in the first lane (-). Phosphospecificity is shown in the second lane (+) where the immunolabeling is completely eliminated by blot treatment with lambda phosphatase (Lambda-Ptase, 1200 units for 30 minutes).

This product is suitable for in-vitro studies under the RESEARCH USE ONLY [RUO] licence. This product must not be used as for diagnostic or other medical purposes.
St John's Laboratory Ltd, Knowledge Dock Business Centre, University Way, London, E16 2RD | Tel: 0208 223 3081