

Anti-Phospho-MAPK14-Thr180/Tyr182 antibody (STJA0003734)

STJA0003734

GENERAL INFORMATION

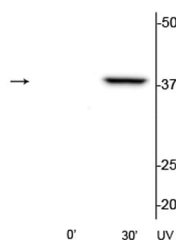
Product Type	Primary antibodies
Short Description	Rabbit polyclonal antibody anti-Phospho-p38 MAPK-Thr180/Tyr182 is suitable for use in Western Blot and Immunohistochemistry research applications.
Applications	WB/IHC
Host/Source	Rabbit
Reactivity	Human/Mouse/Bovine/Canine/Chicken/Non-Human Primates/Rat/Zebrafish

PRODUCT PROPERTIES

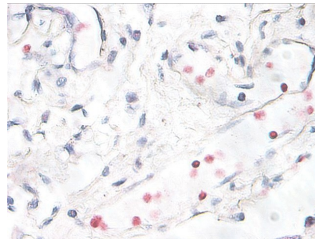
Clonality	Polyclonal
Clone ID	
Concentration	
Conjugation	Unconjugated
Purification	This antibody was antigen affinity purified from pooled serum.
Dilution Range	WB 1:1000 IHC 1:250
Formulation	100 µl in 10 mM HEPES (pH 7.5) , 150 mM NaCl, 100 µg per ml BSA and 50% Glycerol.
Isotype	IgG
Storage Instruction	Store at -20°C for up to 1 year from the date of receipt, and avoid repeat freeze-thaw cycles.

TARGET INFORMATION

Gene ID	
Gene Symbol	Mapk14
Uniprot ID	MK14_RAT
Immunogen	Synthetic phospho-peptide corresponding to amino acid residues surrounding Thr180/Tyr182 conjugated to KLH.
Immunogen Region	
Specificity	
Immunogen Sequence	



Western blot of HeLa cell lysates that had been treated with UV (~254 nm) for 0 NA or 30 NA showing the specific immunolabeling of the ~39 kDa p38 MAPK protein phosphorylated at Thr180/Tyr182.



Immunostaining of human breast cancer tissue showing p38 when phosphorylated at Thr180/Tyr182 (red, 1:250). Photo courtesy of Patsy Ruegg.