

## Anti-Phospho-GRIN2B-Tyr1336 antibody (STJA0003721)

STJA0003721

### GENERAL INFORMATION

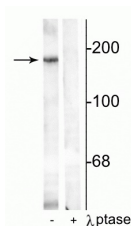
<b>Product Type</b>	Primary antibodies
<b>Short Description</b>	Rabbit polyclonal antibody anti-Phospho-NMDAR2B-Tyr1336 is suitable for use in Western Blot and Immunohistochemistry research applications.
<b>Applications</b>	WB/IHC
<b>Host/Source</b>	Rabbit
<b>Reactivity</b>	Mouse/Rat/Human/Non-Human Primates

### PRODUCT PROPERTIES

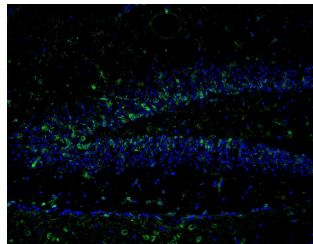
<b>Clonality</b>	Polyclonal
<b>Clone ID</b>	
<b>Concentration</b>	
<b>Conjugation</b>	Unconjugated
<b>Purification</b>	This antibody was antigen affinity purified from pooled serum.
<b>Dilution Range</b>	WB 1:1000 IHC 1:400 ICC 1:100
<b>Formulation</b>	100 µl in 10 mM HEPES (pH 7.5) , 150 mM NaCl, 100 µg per ml BSA and 50% Glycerol.
<b>Isotype</b>	IgG
<b>Storage Instruction</b>	Store at -20°C for up to 1 year from the date of receipt, and avoid repeat freeze-thaw cycles.

### TARGET INFORMATION

<b>Gene ID</b>	24410
<b>Gene Symbol</b>	Grin2b
<b>Uniprot ID</b>	NMDE2_RAT
<b>Immunogen</b>	Synthetic phospho-peptide corresponding to amino acid residues surrounding Tyr1336 conjugated to KLH.
<b>Immunogen Region</b>	
<b>Specificity</b>	
<b>Immunogen Sequence</b>	



Western blot of rat hippocampal lysate showing specific immunolabeling of the ~180 kDa NR2B subunit phosphorylated at Tyr1336 in the first lane (-). Phosphospecificity is shown in the second lane (+) where immunolabeling is completely eliminated by blot treatment with lambda phosphatase (1200 units for 30 min).



Immunostaining of mouse dentate gyrus 48 hours post TMT treatment showing NR2B when phosphorylated at Tyr1336 (green, 1:400). The blue is staining nuclei using DAPI. Photo Courtesy of Rob Wine.

This product is suitable for in-vitro studies under the RESEARCH USE ONLY [RUO] licence. This product must not be used as for diagnostic or other medical purposes.  
St John's Laboratory Ltd, Knowledge Dock Business Centre, University Way, London, E16 2RD | Tel: 0208 223 3081