

Anti-Phospho-GRIN2B-Tyr1252 antibody (STJA0003720)

STJA0003720

GENERAL INFORMATION

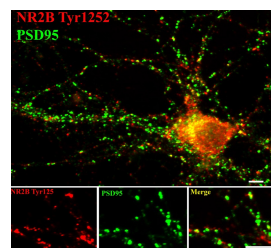
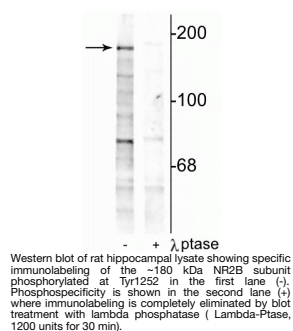
Product Type	Primary antibodies
Short Description	Rabbit polyclonal antibody anti-Phospho-NMDAR2B-Tyr1252 is suitable for use in Western Blot and Immunohistochemistry research applications.
Applications	WB/IHC
Host/Source	Rabbit
Reactivity	Mouse/Rat/Bovine/Canine/Chicken/Human/Non-Human Primates/Zebrafish

PRODUCT PROPERTIES

Clonality	Polyclonal
Clone ID	
Concentration	
Conjugation	Unconjugated
Purification	This antibody was antigen affinity purified from pooled serum.
Dilution Range	WB 1:1000 ICC 1:100-1:400
Formulation	100 µl in 10 mM HEPES (pH 7.5) , 150 mM NaCl, 100 µg per ml BSA and 50% Glycerol.
Isotype	IgG
Storage Instruction	Store at -20°C for up to 1 year from the date of receipt, and avoid repeat freeze-thaw cycles.

TARGET INFORMATION

Gene ID	24410
Gene Symbol	Grin2b
Uniprot ID	NMDE2_RAT
Immunogen	Synthetic phospho-peptide corresponding to amino acid residues surrounding Tyr1252 conjugated to KLH.
Immunogen	
Region	
Specificity	
Immunogen	
Sequence	



Immunostaining of 14 DIV rat cortical neurons showing NR2B phosphorylated at Tyr1252 (red, 1:400) and PSD95 (green). Photo courtesy of Gang Liu.