

## Anti-GRIN2A antibody (C-Term) (STJA0003710)

STJA0003710

### GENERAL INFORMATION

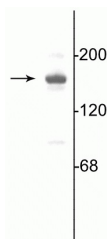
<b>Product Type</b>	Primary antibodies
<b>Short Description</b>	Rabbit polyclonal antibody anti-NMDAR2A (C-Term) is suitable for use in Western Blot, Immunohistochemistry and Immunoprecipitation research applications.
<b>Applications</b>	WB/IHC/IP
<b>Host/Source</b>	Rabbit
<b>Reactivity</b>	Human/Mouse/Rabbit/Rat

### PRODUCT PROPERTIES

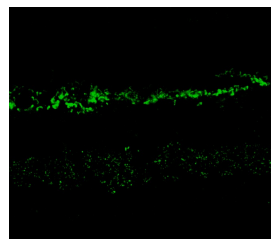
<b>Clonality</b>	Polyclonal
<b>Clone ID</b>	
<b>Concentration</b>	
<b>Conjugation</b>	Unconjugated
<b>Purification</b>	This antibody was antigen affinity purified from pooled serum.
<b>Dilution Range</b>	WB 1:1000 IHC 1:1000 IP 3 µl per 200 µg lysate
<b>Formulation</b>	100 µl in 10 mM HEPES (pH 7.5) , 150 mM NaCl, 100 µg per ml BSA and 50% Glycerol.
<b>Isotype</b>	IgG
<b>Storage</b>	Store at -20°C for up to 1 year from the date of receipt, and avoid repeat freeze-thaw cycles.
<b>Instruction</b>	

### TARGET INFORMATION

<b>Gene ID</b>	24409
<b>Gene Symbol</b>	Grin2a
<b>Uniprot ID</b>	NMDE1_RAT
<b>Immunogen</b>	Fusion protein from the C-terminal region of the NR2A subunit.
<b>Immunogen Region</b>	C-Term
<b>Specificity</b>	
<b>Immunogen Sequence</b>	



Western blot of 10 µg of rat hippocampal lysate showing specific immunolabeling of the ~180 kDa NR2A subunit of the NMDA receptor.



Immunostaining of rabbit retina showing NR2A in the rod and cone photoreceptors in the outer plexiform layer as well as the entire inner plexiform layer.

This product is suitable for in-vitro studies under the RESEARCH USE ONLY [RUO] licence. This product must not be used as for diagnostic or other medical purposes.  
St John's Laboratory Ltd, Knowledge Dock Business Centre, University Way, London, E16 2RD | Tel: 0208 223 3081