

Anti-NEFM antibody (C-Term) (STJA0003702)

STJA0003702

GENERAL INFORMATION

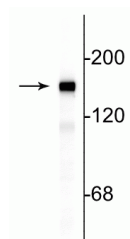
Product Type	Primary antibodies
Short Description	Chicken polyclonal antibody anti-NEFM/NF-M (C-Term) is suitable for use in Western Blot, Immunohistochemistry and Immunocytochemistry research applications.
Applications	WB/IHC/ICC
Host/Source	Chicken
Reactivity	Bovine/Chicken/Human/Mouse/Rat

PRODUCT PROPERTIES

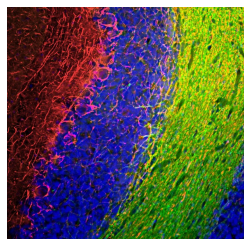
Clonality	Polyclonal
Clone ID	
Concentration	
Conjugation	Unconjugated
Purification	This antibody was total igy fraction.
Dilution Range	WB 1:5000 IHC 1:1000 ICC 1:1000
Formulation	Total IgY fraction in PBS + 10 mM Sodium Azide.
Isotype	IgY
Storage Instruction	Store at -20°C for up to 1 year from the date of receipt, and avoid repeat freeze-thaw cycles.

TARGET INFORMATION

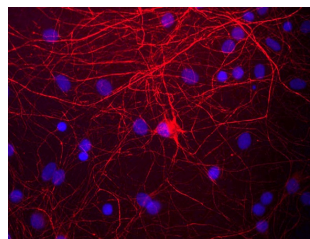
Gene ID	24588
Gene Symbol	Nefm
Uniprot ID	NFM_RAT
Immunogen	Preparation containing the extreme C-terminus expressed in and purification from E. Coli.
Immunogen Region	C-Term
Specificity	
Immunogen Sequence	



Western blot of rat cortical lysate showing specific immunolabeling of the ~145 kDa NF-M protein.



Immunofluorescence of a section of rat cerebellum labeled with anti-Neurofilament-M (STJA0003702, 1:1000, red) and anti-CNP (green). The anti-NFM labels the network of axons of basket neurons and other neurons. The blue is DAPI staining of nuclear DNA.



Immunostaining of cultured rat neurons and glia stained with anti-NFM antibody (STJA0003702, red, 1:1000) and DNA is stained blue.

This product is suitable for in-vitro studies under the RESEARCH USE ONLY [RUO] licence. This product must not be used as for diagnostic or other medical purposes.
St John's Laboratory Ltd, Knowledge Dock Business Centre, University Way, London, E16 2RD | Tel: 0208 223 3081