

## Anti-NEFM antibody (C-Term) [3H11] (STJA0003701)

STJA0003701

### GENERAL INFORMATION

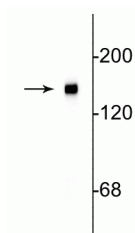
<b>Product Type</b>	Primary antibodies
<b>Short Description</b>	Mouse monoclonal antibody anti-NEFM/NF-M (C-Term) is suitable for use in Western Blot, Immunohistochemistry and Immunocytochemistry research applications.
<b>Applications</b>	WB/IHC/ICC
<b>Host/Source</b>	Mouse
<b>Reactivity</b>	Bovine/Chicken/Human/Mouse/Rat

### PRODUCT PROPERTIES

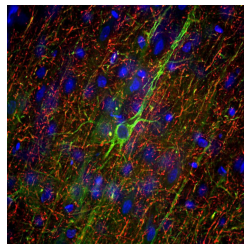
<b>Clonality</b>	Monoclonal
<b>Clone ID</b>	3H11
<b>Concentration</b>	
<b>Conjugation</b>	Unconjugated
<b>Purification</b>	This antibody was protein g purified culture from supernatant.
<b>Dilution Range</b>	WB 1:1000 IHC 1:500-1:5000 ICC 1:100-1:500
<b>Formulation</b>	100 ul in PBS + 10 mM Sodium Azide.
<b>Isotype</b>	IgG1
<b>Storage Instruction</b>	Store at -20°C for up to 1 year from the date of receipt, and avoid repeat freeze-thaw cycles.

### TARGET INFORMATION

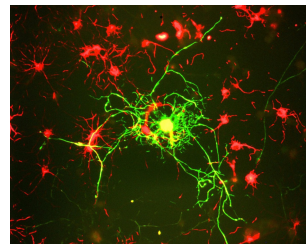
<b>Gene ID</b>	24588
<b>Gene Symbol</b>	Nefm
<b>Uniprot ID</b>	NFM_RAT
<b>Immunogen</b>	Preparation containing the extreme C-terminus expressed in and purification from E. Coli.
<b>Immunogen Region</b>	C-Term
<b>Specificity</b>	
<b>Immunogen Sequence</b>	



Western blot of rat cortical lysate showing specific immunolabeling of the ~145 kDa NF-M protein.



Immunofluorescence of a section of adult rat frontal cortex labeled with anti-Neurofilament-M (STJA0003701, 1:5000, red) and anti-Neurofilament-H (cat. STJA0003698, 1:5000, green). The anti-NFM specifically labels neuron cell bodies and dendrites of pyramidal neurons, while the anti-NFH labels the network of neuronal axons only. The blue is Hoechst staining of nuclear DNA.



Immunostaining of cultured rat neurons showing labeling of NF-M (STJA0003701, green, 1:100) in mature neurons.

This product is suitable for in-vitro studies under the RESEARCH USE ONLY [RUO] licence. This product must not be used as for diagnostic or other medical purposes.  
St John's Laboratory Ltd, Knowledge Dock Business Centre, University Way, London, E16 2RD | Tel: 0208 223 3081