

Anti-NEFL antibody (STJA0003700)

STJA0003700

GENERAL INFORMATION

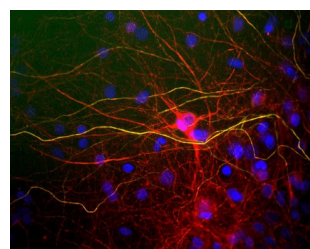
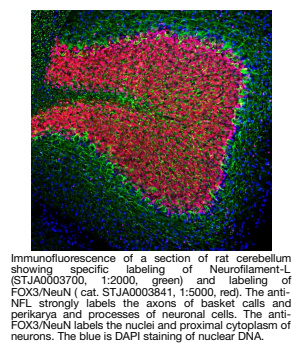
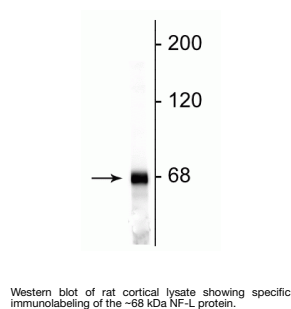
Product Type	Primary antibodies
Short Description	Chicken polyclonal antibody anti-NEFL/NF-L is suitable for use in Western Blot, Immunohistochemistry and Immunocytochemistry research applications.
Applications	WB/IHC/ICC
Host/Source	Chicken
Reactivity	Bovine/Chicken/Human/Mouse/Rat

PRODUCT PROPERTIES

Clonality	Polyclonal
Clone ID	
Concentration	
Conjugation	Unconjugated
Purification	This antibody was total igy fraction.
Dilution Range	WB 1:10000 IHC 1:2000 ICC 1:2000-1:5000
Formulation	Total IgY fraction in PBS + 10 mM Sodium Azide.
Isotype	IgY
Storage	Store at -20°C for up to 1 year from the date of receipt, and avoid repeat freeze-thaw cycles.
Instruction	

TARGET INFORMATION

Gene ID	4747
Gene Symbol	NEFL
Uniprot ID	NFL_HUMAN
Immunogen	Preparation of bovine spinal cord NF-L.
Immunogen Region	
Specificity	
Immunogen Sequence	



This product is suitable for in-vitro studies under the RESEARCH USE ONLY [RUO] licence. This product must not be used as for diagnostic or other medical purposes.
St John's Laboratory Ltd, Knowledge Dock Business Centre, University Way, London, E16 2RD | Tel: 0208 223 3081