

Anti-MBP antibody (STJA0003695)

STJA0003695

GENERAL INFORMATION

Product Type	Primary antibodies
Short Description	Chicken polyclonal antibody anti-MBP is suitable for use in Western Blot, Immunohistochemistry and Immunocytochemistry research applications.
Applications	WB/IHC/ICC
Host/Source	Chicken
Reactivity	Bovine/Human/Mouse/Rat

PRODUCT PROPERTIES

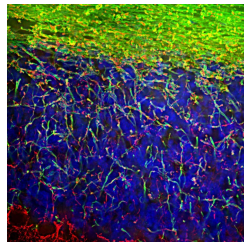
Clonality	Polyclonal
Clone ID	
Concentration	
Conjugation	Unconjugated
Purification	This antibody was total igy fraction.
Dilution Range	WB 1:5000 IHC 1:500-1:5000 ICC 1:500-1:2000
Formulation	Total IgY fraction in PBS + 10 mM Sodium Azide.
Isotype	IgY
Storage Instruction	Store at -20°C for up to 1 year from the date of receipt, and avoid repeat freeze-thaw cycles.

TARGET INFORMATION

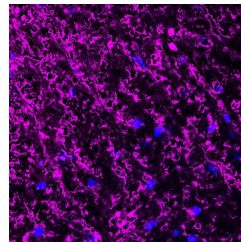
Gene ID	24547
Gene Symbol	Mbp
Uniprot ID	MBP_RAT
Immunogen	Three peptide sequences conserved in higher vertebrate MBP proteins.
Immunogen Region	
Specificity	
Immunogen Sequence	



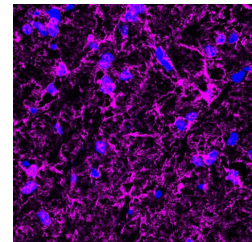
Western blot of rat cortical lysate showing specific immunolabeling of the ~18 kDa and ~22 kDa MBP protein.



Immunofluorescence of a section of rat cerebellum showing specific labeling of myelin basic protein (STJA0003695, 1:5000, green) in the oligodendrocytes and myelin sheaths around axons. The section is colabeled with Anti-NFL (red) labeling dendrites and axons of neuronal cells. The blue stains nuclear DNA.



Immunofluorescence of a perpendicular section from mouse spinal cord gray matter (upper left corner) and white matter (lower right corner) labeling myelin basic protein (STJA0003695, magenta, 1:500) from oligodendrocytes and myelin sheaths. The blue is DAPI counterstaining nuclear DNA. Image kindly provided by Dr. Rodolfo Gatto and Dr. Gerardo Morfini, Department of Anatomy and Cell biology, University of Illinois at Chicago.



Immunofluorescence of a cross-section from mouse corpus callosum labeling myelin basic protein (STJA0003695, magenta, 1:500) in oligodendrocytes and myelin sheaths. The blue is DAPI counterstaining nuclear DNA. Image kindly provided by Dr. Rodolfo Gatto and Dr. Gerardo Morfini, Department of Anatomy and Cell biology, University of Illinois at Chicago.

This product is suitable for in-vitro studies under the RESEARCH USE ONLY [RUO] licence. This product must not be used as for diagnostic or other medical purposes.
St John's Laboratory Ltd, Knowledge Dock Business Centre, University Way, London, E16 2RD | Tel: 0208 223 3081