

Anti-Phospho-STXBP1-Ser241 antibody (STJA0003693)

STJA0003693

GENERAL INFORMATION

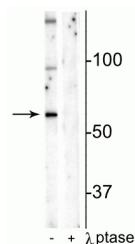
Product Type	Primary antibodies
Short Description	Rabbit polyclonal antibody anti-Phospho-Munc18-1-Ser241 is suitable for use in Western Blot and Immunohistochemistry research applications.
Applications	WB/IHC
Host/Source	Rabbit
Reactivity	Mouse/Rat/Bovine/Canine/Chicken/Human/Non-Human Primates/Sheep

PRODUCT PROPERTIES

Clonality	Polyclonal
Clone ID	
Concentration	
Conjugation	Unconjugated
Purification	This antibody was antigen affinity purified from pooled serum.
Dilution Range	WB 1:1000 IHC 1:500
Formulation	100 µl in 10 mM HEPES (pH 7.5) , 150 mM NaCl, 100 µg per ml BSA and 50% Glycerol.
Isotype	IgG
Storage Instruction	Store at -20°C for up to 1 year from the date of receipt, and avoid repeat freeze-thaw cycles.

TARGET INFORMATION

Gene ID	20910
Gene Symbol	Stxbp1
Uniprot ID	STXB1_MOUSE
Immunogen	Synthetic phospho-peptide corresponding to amino acid residues surrounding Ser241 conjugated to KLH.
Region	
Specificity	
Immunogen Sequence	



Western blot of mouse hippocampal lysate showing specific immunolabeling of the ~65 kDa Munc18-1 protein phosphorylated at Ser241 in the first lane (-). Phosphospecificity is shown in the second lane (+) where immunolabeling is completely eliminated by blot treatment with lambda phosphatase (Lambda-Ptase, 1200 units for 30 min).

This product is suitable for in-vitro studies under the RESEARCH USE ONLY [RUO] licence. This product must not be used as for diagnostic or other medical purposes.
St John's Laboratory Ltd, Knowledge Dock Business Centre, University Way, London, E16 2RD | Tel: 0208 223 3081