

Anti-GRM1 antibody (C-Term) (STJA0003687)

STJA0003687

GENERAL INFORMATION

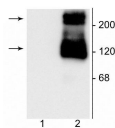
Product Type	Primary antibodies
Short Description	Rabbit polyclonal antibody anti-mGluR1A (C-Term) is suitable for use in Western Blot and Immunohistochemistry research applications.
Applications	WB/IHC
Host/Source	Rabbit
Reactivity	Mouse/Rat

PRODUCT PROPERTIES

Clonality	Polyclonal
Clone ID	
Concentration	
Conjugation	Unconjugated
Purification	This antibody was antigen affinity purified from serum.
Dilution Range	WB 1:1000 IHC 1:500
Formulation	100 µl in 10 mM HEPES (pH 7.5) , 150 mM NaCl, 100 µg per ml BSA and 50% Glycerol.
Isotype	IgG
Storage Instruction	Store at -20°C for up to 1 year from the date of receipt, and avoid repeat freeze-thaw cycles.

TARGET INFORMATION

Gene ID	24414
Gene Symbol	Grm1
Uniprot ID	GRM1_RAT
Immunogen	Synthetic peptide corresponding to amino acid residues from the C-terminal region conjugated to KLH.
Immunogen Region	C-Term
Specificity	
Immunogen Sequence	



Western blot of 10 µg of HEK 293 cells expressing: 1) mGluR5 and 2) mGluR1A. Specific immunolabeling of the ~125 kDa monomer and the ~250 kDa dimer of mGluR1A is shown in the second lane (2). Specificity is confirmed in the first lane (1), as the mGluR1A antibody shows no reactivity toward mGluR5.

This product is suitable for in-vitro studies under the RESEARCH USE ONLY [RUO] licence. This product must not be used as for diagnostic or other medical purposes.
St John's Laboratory Ltd, Knowledge Dock Business Centre, University Way, London, E16 2RD | Tel: 0208 223 3081