

Anti-Phospho-MAP2K1/2-Ser218/222 antibody (STJA0003683)

STJA0003683

GENERAL INFORMATION

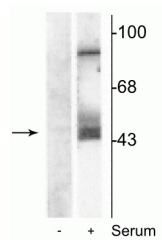
Product Type	Primary antibodies
Short Description	Rabbit polyclonal antibody anti-Phospho-MEK1/2-Ser218/222 is suitable for use in Western Blot research applications.
Applications	WB
Host/Source	Rabbit
Reactivity	Mouse/Human/Bovine/Canine/Chicken/Non-Human Primates/Rat/Xenopus/Zebrafish

PRODUCT PROPERTIES

Clonality	Polyclonal
Clone ID	
Concentration	
Conjugation	Unconjugated
Purification	This antibody was antigen affinity purified from pooled serum.
Dilution Range	WB 1:1000
Formulation	100 µl in 10 mM HEPES (pH 7.5) , 150 mM NaCl, 100 µg per ml BSA and 50% Glycerol.
Isotype	IgG
Storage Instruction	Store at -20°C for up to 1 year from the date of receipt, and avoid repeat freeze-thaw cycles.

TARGET INFORMATION

Gene ID	5604
Gene Symbol	MAP2K1
Uniprot ID	MP2K1_HUMAN
Immunogen	Synthetic phospho-peptide corresponding to amino acid residues surrounding Ser218/222 conjugated to KLH.
Immunogen Region	
Specificity	
Immunogen Sequence	



Western Blot of NIH 3T3 cell lysates showing specific immunolabeling of the ~45 kDa MEK 1/2 protein phosphorylated at Ser218 and Ser222. The cells were either serum starved (-) or incubated in the presence of serum (+). Immunolabeling of an additional band at ~95 kDa was also observed.

This product is suitable for in-vitro studies under the RESEARCH USE ONLY [RUO] licence. This product must not be used as for diagnostic or other medical purposes.
St John's Laboratory Ltd, Knowledge Dock Business Centre, University Way, London, E16 2RD | Tel: 0208 223 3081