

Anti-Phospho-MECP2-Ser80 antibody (STJA0003680)

STJA0003680

GENERAL INFORMATION

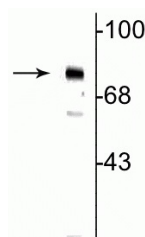
Product Type	Primary antibodies
Short Description	Rabbit polyclonal antibody anti-Phospho-MeCP2-Ser80 is suitable for use in Western Blot and Immunohistochemistry research applications.
Applications	WB/IHC
Host/Source	Rabbit
Reactivity	Human/Mouse/Rat

PRODUCT PROPERTIES

Clonality	Polyclonal
Clone ID	
Concentration	
Conjugation	Unconjugated
Purification	Neat serum.
Dilution Range	WB 1:1000 IHC 1:100-1:250
Formulation	100 µl in 10 mM HEPES (pH 7.5) , 150 mM NaCl, 100 µg per ml BSA and 50% Glycerol.
Isotype	IgG
Storage Instruction	Store at -20°C for up to 1 year from the date of receipt, and avoid repeat freeze-thaw cycles.

TARGET INFORMATION

Gene ID	4204
Gene Symbol	MECP2
Uniprot ID	MECP2_HUMAN
Immunogen	Synthetic phospho-peptide corresponding to amino acid residues surrounding Ser80 conjugated to KLH.
Immunogen Region	
Specificity	
Immunogen Sequence	



Western blot of neonatal rat brain showing specific immunolabeling of the ~75 kDa MECP2 protein phosphorylated at Ser80.

This product is suitable for in-vitro studies under the RESEARCH USE ONLY [RUO] licence. This product must not be used as for diagnostic or other medical purposes.
St John's Laboratory Ltd, Knowledge Dock Business Centre, University Way, London, E16 2RD | Tel: 0208 223 3081