

Anti-Phospho-GRIA1-Ser845 antibody (STJA0003662)

STJA0003662

GENERAL INFORMATION

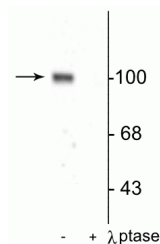
Product Type	Primary antibodies
Short Description	Rabbit polyclonal antibody anti-Phospho-GluR1-Ser845 is suitable for use in Western Blot and Immunohistochemistry research applications.
Applications	WB/IHC
Host/Source	Rabbit
Reactivity	Mouse/Rat/Human/Non-Human Primates

PRODUCT PROPERTIES

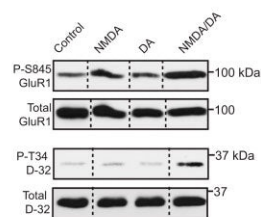
Clonality	Polyclonal
Clone ID	
Concentration	
Conjugation	Unconjugated
Purification	This antibody was antigen affinity purified from pooled serum.
Dilution Range	WB 1:1000 IHC 1:1000
Formulation	100 µl in 10 mM HEPES (pH 7.5) , 150 mM NaCl, 100 µg per ml BSA and 50% Glycerol.
Isotype	IgG
Storage Instruction	Store at -20°C for up to 1 year from the date of receipt, and avoid repeat freeze-thaw cycles.

TARGET INFORMATION

Gene ID	50592
Gene Symbol	Gria1
Uniprot ID	GRIA1_RAT
Immunogen	Synthetic phospho-peptide corresponding to amino acid residues surrounding Ser845 conjugated to KLH.
Immunogen Region	
Specificity	
Immunogen Sequence	



Western blot of rat hippocampal lysate showing specific immunolabeling of the ~100 kDa GluR1 protein phosphorylated at Ser845 in the first lane (-). Phosphospecificity is shown in the second lane (+) where immunolabeling is completely eliminated by blot treatment with lambda phosphatase (Lambda-Ptase, 1200 units for 30 min).



Effects of striatal slice treatment with NMDA (25 µM, 5 min), dopamine (DA, 10 µM, 15 min), or both on PKA-dependent phosphorylation of Ser845 GluR1 (top) and Thr34 DARPP-32 (bottom). Image from publication CC-BY-4.0. PMID: 35835216