

Anti-GABA Transporter/GAT 1 antibody (C-Term) (STJA0003654)

STJA0003654

GENERAL INFORMATION

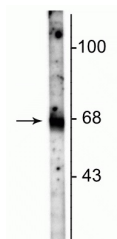
Product Type	Primary antibodies
Short Description	Rabbit polyclonal antibody anti-GABA Transporter/GAT 1 (C-Term) is suitable for use in Western Blot and Immunohistochemistry research applications.
Applications	WB/IHC
Host/Source	Rabbit
Reactivity	Human/Mouse/Non-Human Primates/Rat

PRODUCT PROPERTIES

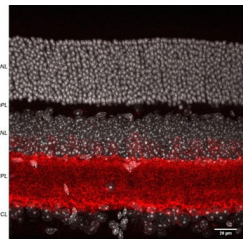
Clonality	Polyclonal
Clone ID	
Concentration	
Conjugation	Unconjugated
Purification	This antibody was antigen affinity purified from serum.
Dilution Range	WB 1:1000 IHC 1:100-1:1000
Formulation	100 µl in 10 mM HEPES (pH 7.5) , 150 mM NaCl, 100 µg per ml BSA and 50% Glycerol.
Isotype	IgG
Storage	Store at -20°C for up to 1 year from the date of receipt, and avoid repeat freeze-thaw cycles.
Instruction	

TARGET INFORMATION

Gene ID	79212
Gene Symbol	Slc6a1
Uniprot ID	SC6A1_RAT
Immunogen	Synthetic peptide corresponding to amino acid residues from the C-terminal region conjugated to KLH.
Immunogen Region	C-Term
Specificity	
Immunogen Sequence	



Western blot of rat hippocampal lysate showing specific immunolabeling of the ~67 kDa GAT-1 protein.



Immunofluorescence of mouse retina specifically labeling GAT-1 protein (STJA0003654, red, 1:500) in the inner plexiform layer (IPL). The white identifies nuclei stained with DAPI. The retina was fixed with 4% paraformaldehyde for 30 minutes, embedded in 5% agarose, and sliced into 60 micron thick slices with a vibratome. The image is a Z-stack taken from a confocal microscope. Image courtesy of Andrea Wellington, Assistant Research Scientist, University of Arizona Physiology Dept.

This product is suitable for in-vitro studies under the RESEARCH USE ONLY [RUO] licence. This product must not be used as for diagnostic or other medical purposes.
St John's Laboratory Ltd, Knowledge Dock Business Centre, University Way, London, E16 2RD | Tel: 0208 223 3081