

## Anti-Dopamine Beta-Hydroxylase antibody (N-Term) (STJA0003615)

STJA0003615

### GENERAL INFORMATION

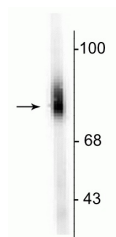
<b>Product Type</b>	Primary antibodies
<b>Short Description</b>	Sheep polyclonal antibody anti-Dopamine beta-Hydroxylase (N-Term) is suitable for use in Western Blot research applications.
<b>Applications</b>	WB
<b>Host/Source</b>	Sheep
<b>Reactivity</b>	Human/Non-Human Primates

### PRODUCT PROPERTIES

<b>Clonality</b>	Polyclonal
<b>Clone ID</b>	
<b>Concentration</b>	
<b>Conjugation</b>	Unconjugated
<b>Purification</b>	This antibody was antigen affinity purified from pooled serum.
<b>Dilution Range</b>	WB 1:1000
<b>Formulation</b>	100 µl in 10 mM HEPES (pH 7.5) , 150 mM NaCl, 100 µg per ml BSA and 50% Glycerol.
<b>Isotype</b>	IgG
<b>Storage Instruction</b>	Store at -20°C for up to 1 year from the date of receipt, and avoid repeat freeze-thaw cycles.

### TARGET INFORMATION

<b>Gene ID</b>	1621
<b>Gene Symbol</b>	DBH
<b>Uniprot ID</b>	DOPO_HUMAN
<b>Immunogen</b>	Synthetic peptide corresponding to amino acid residues from the N-terminal region conjugated to KLH.
<b>Immunogen Region</b>	N-Term
<b>Specificity</b>	
<b>Immunogen Sequence</b>	



Western blot of human adrenal medulla lysate showing specific immunolabeling of the ~75 kDa DBH protein.

This product is suitable for in-vitro studies under the RESEARCH USE ONLY [RUO] licence. This product must not be used as for diagnostic or other medical purposes.  
St John's Laboratory Ltd, Knowledge Dock Business Centre, University Way, London, E16 2RD | Tel: 0208 223 3081