

Anti-Dopamine Beta-Hydroxylase antibody (C-Term) (STJA0003614)

STJA0003614

GENERAL INFORMATION

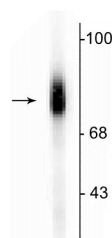
Product Type	Primary antibodies
Short Description	Sheep polyclonal antibody anti-Dopamine beta-Hydroxylase (C-Term) is suitable for use in Western Blot research applications.
Applications	WB
Host/Source	Sheep
Reactivity	Human/Mouse/Non-Human Primates

PRODUCT PROPERTIES

Clonality	Polyclonal
Clone ID	
Concentration	
Conjugation	Unconjugated
Purification	This antibody was antigen affinity purified from pooled serum.
Dilution Range	WB 1:1000
Formulation	100 µl in 10 mM HEPES (pH 7.5) , 150 mM NaCl, 100 µg per ml BSA and 50% Glycerol.
Isotype	IgG
Storage Instruction	Store at -20°C for up to 1 year from the date of receipt, and avoid repeat freeze-thaw cycles.

TARGET INFORMATION

Gene ID	1621
Gene Symbol	DBH
Uniprot ID	DOPO_HUMAN
Immunogen	Synthetic peptide corresponding to amino acid residues from the C-terminal region conjugated to KLH.
Immunogen Region	C-Term
Specificity	
Immunogen Sequence	



Western blot of human adrenal medulla lysate showing specific immunolabeling of the ~75 kDa DBH protein.

This product is suitable for in-vitro studies under the RESEARCH USE ONLY [RUO] licence. This product must not be used as for diagnostic or other medical purposes.
St John's Laboratory Ltd, Knowledge Dock Business Centre, University Way, London, E16 2RD | Tel: 0208 223 3081