

Anti-Phospho-CREB1-Ser133 antibody (STJA0003605)

STJA0003605

GENERAL INFORMATION

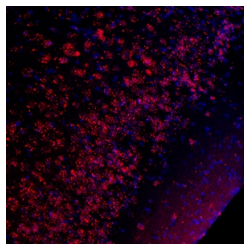
Product Type	Primary antibodies
Short Description	Rabbit polyclonal antibody anti-Phospho-CREB-Ser133 is suitable for use in Western Blot and Immunohistochemistry research applications.
Applications	WB/IHC
Host/Source	Rabbit
Reactivity	Mouse/Rat/Bovine/Canine/Chicken/Human/Non-Human Primates/Sheep/Xenopus/Zebrafish

PRODUCT PROPERTIES

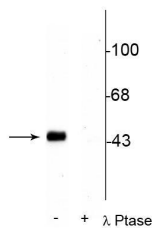
Clonality	Polyclonal
Clone ID	
Concentration	
Conjugation	Unconjugated
Purification	This antibody was antigen affinity purified from pooled serum.
Dilution Range	WB 1:1000 IHC 1:100-1:1000
Formulation	100 µl in 10 mM HEPES (pH 7.5) , 150 mM NaCl, 100 µg per ml BSA and 50% Glycerol.
Isotype	IgG
Storage Instruction	Store at -20°C for up to 1 year from the date of receipt, and avoid repeat freeze-thaw cycles.

TARGET INFORMATION

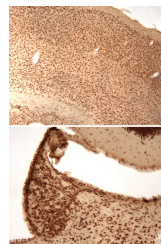
Gene ID	81646
Gene Symbol	Creb1
Uniprot ID	CREB1_RAT
Immunogen	Synthetic phospho-peptide corresponding to amino acid residues surrounding Ser133 conjugated to KLH.
Immunogen Region	
Specificity	
Immunogen Sequence	



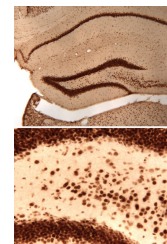
Immunolabeling of a section of mouse piriform cortex labeled with Anti-Phospho-Ser133 CREB (STJA0003605, red, 1:1000). Cell nuclei are visualized with DAPI DNA stain (blue).



Western blot of rat hippocampal lysate stimulated with forskolin showing specific immunolabeling of the ~45 kDa CREB phosphorylated at Ser133 in the first lane (-). Phosphospecificity is shown in the second lane (+) where immunolabeling is completely eliminated by lysate treatment with lambda phosphatase (Lambda-Ptase, 800 units/mg protein for 30 min).



Immunolabeling of mouse cerebral cortex (top) and habenula (bottom) brain sections labeled with anti-phospho-ser133 CREB (STJA0003605; DAB, 1:100). These images were kindly provided by Dr. Anton Reiner, Univ. of Tennessee Health Science Center (Memphis, TN).



Immunolabeling of mouse hippocampal section labeled with anti-phospho-ser133 CREB (STJA0003605; DAB, 1:100, top). The image on the bottom is a magnification of the dentate gyrus section of the hippocampus. These images were kindly provided by Dr. Anton Reiner, Univ. of Tennessee Health Science Center (Memphis, TN).

This product is suitable for in-vitro studies under the RESEARCH USE ONLY [RUO] licence. This product must not be used as for diagnostic or other medical purposes.
St John's Laboratory Ltd, Knowledge Dock Business Centre, University Way, London, E16 2RD | Tel: 0208 223 3081