

Anti-Collagen 1, alpha 1 propeptide antibody (STJA0003599)

STJA0003599

GENERAL INFORMATION

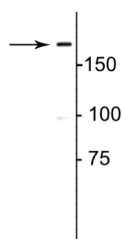
Product Type	Primary antibodies
Short Description	Rabbit polyclonal antibody anti-Collagen 1, alpha 1 propeptide is suitable for use in Western Blot and Immunohistochemistry research applications.
Applications	WB/IHC
Host/Source	Rabbit
Reactivity	Human/Mouse/Rat/Bovine/Canine/Chicken/Feline/Finch/Goat/Guinea Pig/Hamster/Horse/Non-Human Primates/Rabbit/Sheep/Vole/Xenopus

PRODUCT PROPERTIES

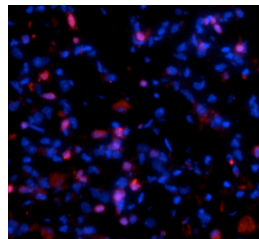
Clonality	Polyclonal
Clone ID	
Concentration	
Conjugation	Unconjugated
Purification	This antibody was antigen affinity purified from serum.
Dilution Range	WB 1:1000 IHC 1:100
Formulation	100 ul in PBS
Isotype	IgG
Storage	Store at -20°C for up to 1 year from the date of receipt, and avoid repeat freeze-thaw cycles.
Instruction	

TARGET INFORMATION

Gene ID	1277
Gene Symbol	COL1A1
Uniprot ID	CO1A1_HUMAN
Immunogen	Synthetic peptide corresponding to amino acid residues specific to the collagen 1, alpha 1 propeptide conjugated to KLH.
Immunogen Region	
Specificity	
Immunogen Sequence	



Western blot of rat lung lysate showing specific immunolabeling of the ~180 kDa collagen 1.



Immunostaining of fibrotic mouse lung tissue showing specific staining of collagen 1 molecules (621-COL1P, 1:100, red) that are still associated with the cells in which they were synthesized. The blue is staining DNA.

This product is suitable for in-vitro studies under the RESEARCH USE ONLY [RUO] licence. This product must not be used as for diagnostic or other medical purposes.
St John's Laboratory Ltd, Knowledge Dock Business Centre, University Way, London, E16 2RD | Tel: 0208 223 3081