

Anti-Phospho-CAMK2A/B-Thr286 antibody (STJA0003589)

STJA0003589

GENERAL INFORMATION

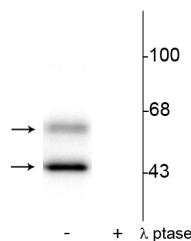
Product Type	Primary antibodies
Short Description	Rabbit polyclonal antibody anti-Phospho-CaM Kinase II-Thr286 is suitable for use in Western Blot and Immunohistochemistry research applications.
Applications	WB/IHC
Host/Source	Rabbit
Reactivity	Human/Mouse/Rabbit/Rat/Zebrafish

PRODUCT PROPERTIES

Clonality	Polyclonal
Clone ID	
Concentration	
Conjugation	Unconjugated
Purification	This antibody was antigen affinity purified from pooled serum.
Dilution Range	WB 1:1000 IHC 1:1000
Formulation	100 µl in 10 mM HEPES (pH 7.5) , 150 mM NaCl, 100 µg per ml BSA and 50% Glycerol.
Isotype	IgG
Storage	Store at -20°C for up to 1 year from the date of receipt, and avoid repeat freeze-thaw cycles.
Instruction	

TARGET INFORMATION

Gene ID	25400
Gene Symbol	Camk2a
Uniprot ID	KCC2A_RAT
Immunogen	Synthetic phospho-peptide corresponding to amino acid residues surrounding Thr286 conjugated to KLH.
Immunogen Region	
Specificity	
Immunogen Sequence	



Western blot of rat brain lysate showing specific immunolabeling of the ~50 kDa Alpha- and the ~60 kDa Beta-CaM Kinase II phosphorylated at Thr286 in the first lane (-). Phosphospecificity is shown in the second lane (+) where the immunolabeling is completely eliminated by blot treatment with lambda phosphatase (Lambda-Phatase, 1200 units for 30 minutes).

This product is suitable for in-vitro studies under the RESEARCH USE ONLY [RUO] licence. This product must not be used as for diagnostic or other medical purposes.
St John's Laboratory Ltd, Knowledge Dock Business Centre, University Way, London, E16 2RD | Tel: 0208 223 3081