

Anti-CALB2 antibody (STJA0003588)

STJA0003588

GENERAL INFORMATION

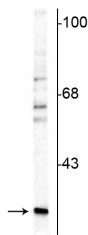
Product Type	Primary antibodies
Short Description	Sheep polyclonal antibody anti-Calretinin is suitable for use in Western Blot and Immunohistochemistry research applications.
Applications	WB/IHC
Host/Source	Sheep
Reactivity	Rat/Human/Mouse/Non-Human Primates

PRODUCT PROPERTIES

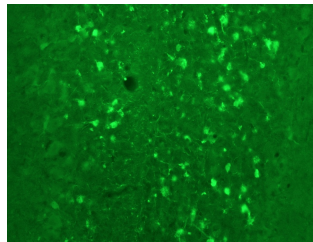
Clonality	Polyclonal
Clone ID	
Concentration	
Conjugation	Unconjugated
Purification	This antibody was protein g purified from serum.
Dilution Range	WB 1:1000 IHC 1:500
Formulation	100 µl in 10 mM Tris, 100 mM NaCl
Isotype	IgG
Storage Instruction	Store at -20°C for up to 1 year from the date of receipt, and avoid repeat freeze-thaw cycles.

TARGET INFORMATION

Gene ID	117059
Gene Symbol	Calb2
Uniprot ID	CALB2_RAT
Immunogen	purification guinea pig calretinin.
Immunogen Region	
Specificity	
Immunogen Sequence	



Western blot of rat cerebellar lysate showing specific immunolabeling of the ~29 kDa calretinin protein.



Immunostaining of rat cerebellum showing fluorescence of calretinin (STJA0003588, green, 1:500) containing cells.

This product is suitable for in-vitro studies under the RESEARCH USE ONLY [RUO] licence. This product must not be used as for diagnostic or other medical purposes.
St John's Laboratory Ltd, Knowledge Dock Business Centre, University Way, London, E16 2RD | Tel: 0208 223 3081