

Anti-Phospho-ATF2-Thr52 antibody (STJA0003584)

STJA0003584

GENERAL INFORMATION

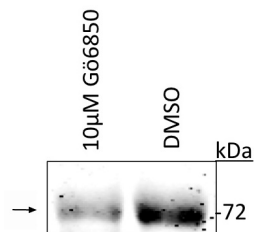
Product Type	Primary antibodies
Short Description	Rabbit polyclonal antibody anti-Phospho-ATF2-Thr52 is suitable for use in Western Blot research applications.
Applications	WB
Host/Source	Rabbit
Reactivity	Human/Mouse

PRODUCT PROPERTIES

Clonality	Polyclonal
Clone ID	
Concentration	
Conjugation	Unconjugated
Purification	This antibody was antigen affinity purified from pooled serum.
Dilution Range	WB 1:250
Formulation	100 µl in 10 mM HEPES (pH 7.5) , 150 mM NaCl, 100 µg per ml BSA and 50% Glycerol.
Isotype	IgG
Storage Instruction	Store at -20°C for up to 1 year from the date of receipt, and avoid repeat freeze-thaw cycles.

TARGET INFORMATION

Gene ID	1386
Gene Symbol	ATF2
Uniprot ID	ATF2_HUMAN
Immunogen	Synthetic phospho-peptide corresponding to amino acid residues surrounding Thr52 conjugated to KLH.
Immunogen Region	
Specificity	
Immunogen Sequence	



Western blot of UACC903 melanoma cell line lysate (DMSO) showing specific immunolabeling of the ~ 72 kDa ATF2 protein phosphorylated at Thr52. Immunolabeling is reduced by treatment of the lysate with the PKC catalytic inhibitor Gö6850. Image courtesy of Eric Lau and Ze NA ev Ronai.

This product is suitable for in-vitro studies under the RESEARCH USE ONLY [RUO] licence. This product must not be used as for diagnostic or other medical purposes.
St John's Laboratory Ltd, Knowledge Dock Business Centre, University Way, London, E16 2RD | Tel: 0208 223 3081