

Anti-Phospho-SNCA-Ser129 antibody (STJA0003577)

STJA0003577

GENERAL INFORMATION

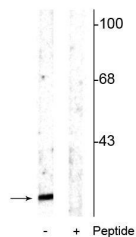
Product Type	Primary antibodies
Short Description	Rabbit polyclonal antibody anti-Phospho-Alpha synuclein-Ser129 is suitable for use in Western Blot and Immunohistochemistry research applications.
Applications	WB/IHC
Host/Source	Rabbit
Reactivity	Human/Mouse/Rat/Bovine/Canine/Non-Human Primates

PRODUCT PROPERTIES

Clonality	Polyclonal
Clone ID	
Concentration	
Conjugation	Unconjugated
Purification	This antibody was antigen affinity purified from pooled serum.
Dilution Range	WB 1:1000 IHC 1:200
Formulation	100 µl in 10 mM HEPES (pH 7.5) , 150 mM NaCl, 100 µg per ml BSA and 50% Glycerol.
Isotype	IgG
Storage Instruction	Store at -20°C for up to 1 year from the date of receipt, and avoid repeat freeze-thaw cycles.

TARGET INFORMATION

Gene ID	29219
Gene Symbol	Snca
Uniprot ID	SYUA_RAT
Immunogen	Synthetic phospho-peptide corresponding to amino acid residues surrounding Ser129 conjugated to KLH.
Immunogen Region	
Specificity	
Immunogen Sequence	



Western blot of rat cortical lysate showing specific immunolabeling of the ~15 kDa alpha synuclein protein phosphorylated at Ser129 in the first lane (-). Phosphospecificity is shown in the second lane (+) where the immunolabeling is blocked by the phosphopeptide used as antigen but not by the corresponding non-phosphopeptide (not shown).