

## Anti-RNase 8 antibody (STJA0002917)

STJA0002917

### GENERAL INFORMATION

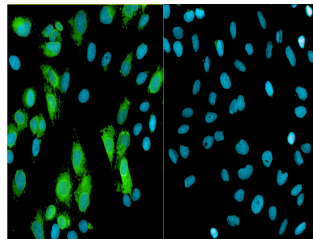
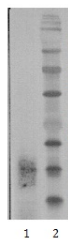
<b>Product Type</b>	Primary antibodies
<b>Short Description</b>	Rabbit polyclonal antibody anti-Ribonuclease 8 is suitable for use in ELISA, Western Blot and Immunofluorescence research applications.
<b>Applications</b>	ELISA/WB/IF
<b>Host/Source</b>	Rabbit
<b>Reactivity</b>	Human

### PRODUCT PROPERTIES

<b>Clonality</b>	Polyclonal
<b>Clone ID</b>	
<b>Concentration</b>	
<b>Conjugation</b>	Unconjugated
<b>Purification</b>	RNase 8-affinity purified
<b>Dilution Range</b>	ELISA 1 to 2 ng/ml; WB 0, 1 to 0, 5 µg/ml; IF 1 to 10 µg/ml Antibody optimal dilution has to be established practically for each antigen and assay format
<b>Formulation</b>	Concentrated ammonium sulphate in PBS pH 7.4
<b>Isotype</b>	IgG
<b>Storage</b>	Store at +4°C upon receipt. As product is (NH <sub>4</sub> ) <sub>2</sub> SO <sub>4</sub> precipitate, mix well by pipetting or vortexing prior use
<b>Instruction</b>	

### TARGET INFORMATION

<b>Gene ID</b>	<a href="#">122665</a>
<b>Gene Symbol</b>	<a href="#">RNASE8</a>
<b>Uniprot ID</b>	<a href="#">RNASE8_HUMAN</a>
<b>Immunogen</b>	Recombinant human RNase 8 protein produced by CHO-based proprietary suspension cell line. Human Ribonuclease 8
<b>Immunogen Region</b>	
<b>Specificity</b>	human RNase 8, cross-reactivity to human RNase 7
<b>Immunogen Sequence</b>	



This product is suitable for in-vitro studies under the RESEARCH USE ONLY [RUO] licence. This product must not be used as for diagnostic or other medical purposes.  
St John's Laboratory Ltd, Knowledge Dock Business Centre, University Way, London, E16 2RD | Tel: 0208 223 3081