

Anti-RET antibody (STJA0002880)

STJA0002880

GENERAL INFORMATION

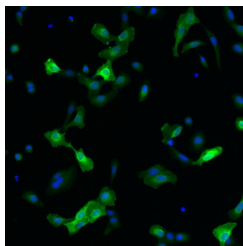
Product Type	Primary antibodies
Short Description	Chicken polyclonal antibody anti-RET is suitable for use in ELISA, Western Blot and Immunofluorescence research applications.
Applications	ELISA/WB/IF
Host/Source	Chicken
Reactivity	Human

PRODUCT PROPERTIES

Clonality	Polyclonal
Clone ID	
Concentration	
Conjugation	Unconjugated
Purification	RET affinity purified
Dilution Range	WB 0.1 to 0.2 µg/ml; ELISA 8 to 12, 5 ng/ml, IF 2 to 4 µg/ml Polyclonal antibody working titer has to be established practically for each particular antigen and assay format
Formulation	Concentrated ammonium sulphate in PBS pH 7.4
Isotype	IgY
Storage Instruction	Store at +4°C upon receipt. As product is (NH ₄) ₂ SO ₄ precipitate, mix well by pipetting or vortexing prior use

TARGET INFORMATION

Gene ID	5979
Gene Symbol	RET
Uniprot ID	RET_HUMAN
Immunogen	Recombinant His-tagged extracellular fragment of human RET protein produced using CHO-based proprietary suspension cell line. The extracellular fragment of hRET was expressed and secreted to the cell culture supernatant. Protein was purified by Ni-af
Immunogen Region	
Specificity	Human RET
Immunogen Sequence	



This product is suitable for in-vitro studies under the RESEARCH USE ONLY [RUO] licence. This product must not be used as for diagnostic or other medical purposes.
St John's Laboratory Ltd, Knowledge Dock Business Centre, University Way, London, E16 2RD | Tel: 0208 223 3081