

Anti-GFRa-1 antibody (STJA0002877)

STJA0002877

GENERAL INFORMATION

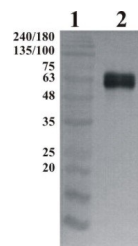
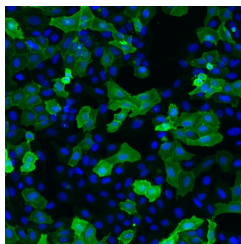
Product Type	Primary antibodies
Short Description	Chicken polyclonal antibody anti-GFRa-1 is suitable for use in ELISA, Western Blot and Immunofluorescence research applications.
Applications	ELISA/WB/IF
Host/Source	Chicken
Reactivity	Human

PRODUCT PROPERTIES

Clonality	Polyclonal
Clone ID	
Concentration	
Conjugation	Unconjugated
Purification	GFRa-1 affinity purified
Dilution Range	ELISA 0.02 to 0.05 µg/ml; WB 0.1 to 0.2 µg/ml; IF 0.5 to 1 µg/ml Polyclonal antibody working titer has to be established practically for each particular antigen and assay format
Formulation	Concentrated ammonium sulphate in PBS pH 7.4
Isotype	IgY
Storage Instruction	Store at +4 °C upon receipt. As product is (NH ₄) ₂ SO ₄ precipitate, mix well by pipetting or vortexing prior use

TARGET INFORMATION

Gene ID	2674
Gene Symbol	GFRA1
Uniprot ID	GFRA1_HUMAN
Immunogen	Recombinant His-tagged human GFRa-1 protein produced using CHO-based proprietary suspension cell line. For production of hGFRa-1, glycosylphosphatidyl-inositol GPI-anchor was removed and protein was secreted to the cell culture supernatant. Protein w
Immunogen Region	
Specificity	Human GFRa-1 doesn't cross-react with hGFRa-2, hGFRa-3, hGFRa-4
Immunogen Sequence	



This product is suitable for in-vitro studies under the RESEARCH USE ONLY [RUO] licence. This product must not be used as for diagnostic or other medical purposes.
St John's Laboratory Ltd, Knowledge Dock Business Centre, University Way, London, E16 2RD | Tel: 0208 223 3081