

Anti-CDNF antibody (STJA0002819)

STJA0002819

GENERAL INFORMATION

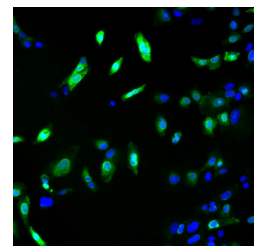
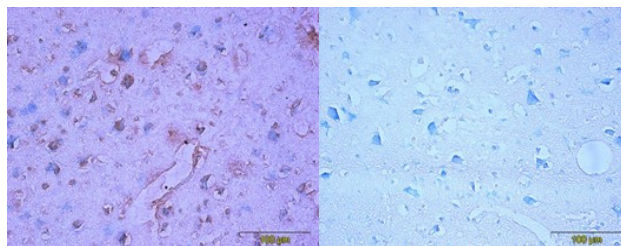
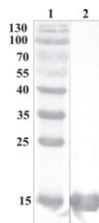
Product Type	Primary antibodies
Short Description	Rabbit polyclonal antibody anti-CDNF is suitable for use in ELISA, Western Blot, Immunofluorescence and Immunohistochemistry research applications.
Applications	ELISA/WB/IF/IHC-P
Host/Source	Rabbit
Reactivity	Human/Mouse

PRODUCT PROPERTIES

Clonality	Polyclonal
Clone ID	
Concentration	
Conjugation	Unconjugated
Purification	CDNF-affinity purification
Dilution Range	ELISA 0.1 to 0.2 µg/ml; WB 0.1 to 0.2 µg/ml; IF 0.3 to 2 µg/ml IHC-P (on formalin-fixed, paraffin-embedded tissues, antigen retrieval)-5 to 10 µg/ml; Monoclonal antibody working dilution has to be established practically for each particular antigen and
Formulation	50% saturated ammonium sulphate in PBS pH 7.4
Isotype	IgG
Storage Instruction	Store at +4°C upon receipt. As product is (NH ₄) ₂ SO ₄ precipitate, mix well by pipetting or vortexing prior use

TARGET INFORMATION

Gene ID	441549
Gene Symbol	CDNF
Uniprot ID	CDNF_HUMAN
Immunogen	Recombinant human CDFN protein produced using CHO-based proprietary suspension cell line. Purified from cell culture supernatant. . Human CDFN
Immunogen Region	
Specificity	Human, mouse; others not tested
Immunogen Sequence	



This product is suitable for in-vitro studies under the RESEARCH USE ONLY [RUO] licence. This product must not be used as for diagnostic or other medical purposes.
St John's Laboratory Ltd, Knowledge Dock Business Centre, University Way, London, E16 2RD | Tel: 0208 223 3081