

Anti-Papillomavirus type 1 E2-protein antibody (199-208 aa) [5E11] (STJA0002816)

STJA0002816

GENERAL INFORMATION

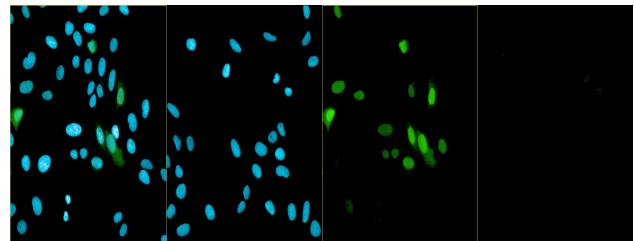
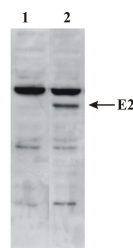
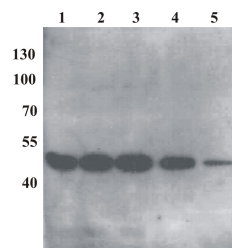
Product Type	Primary antibodies
Short Description	Mouse monoclonal antibody anti-Papillomavirus type 1 E2-protein (199-208 aa) is suitable for use in ELISA, Western Blot, Immunofluorescence and Immunoprecipitation research applications.
Applications	ELISA/WB/IF/IP
Host/Source	Mouse
Reactivity	PV

PRODUCT PROPERTIES

Clonality	Monoclonal
Clone ID	5E11
Concentration	
Conjugation	Unconjugated
Purification	Protein G purification
Dilution Range	ELISA 0.02 µg/ml; WB 0.2 to 1.2 µg/ml; IF 0.4 to 24 µg/ml; Monoclonal antibody working titer has to be established practically for each particular antigen and assay format.
Formulation	PBS with 50% glycerol
Isotype	IgG
Storage	Store at -20 or -70°C upon receipt. Divide antibody into aliquots prior usage. Avoid multiple freeze-thaw cycles as product degradation may result
Instruction	

TARGET INFORMATION

Gene ID	
Gene Symbol	
Uniprot ID	
Immunogen	199-208 aa
Immunogen Region	199-208 aa
Specificity	
Immunogen Sequence	



This product is suitable for in-vitro studies under the RESEARCH USE ONLY [RUO] licence. This product must not be used as for diagnostic or other medical purposes.
St John's Laboratory Ltd, Knowledge Dock Business Centre, University Way, London, E16 2RD | Tel: 0208 223 3081