

Anti-Papillomavirus type 1 E2-protein antibody (210-410 aa) [3H5] (STJA0002815)

STJA0002815

GENERAL INFORMATION

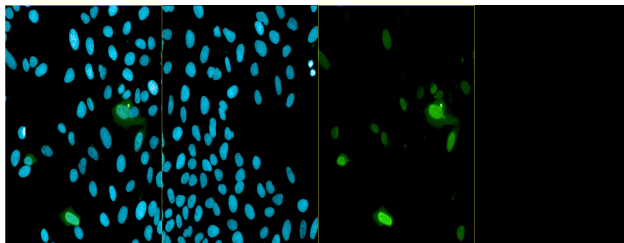
Product Type	Primary antibodies
Short Description	Mouse monoclonal antibody anti-Papillomavirus type 1 E2-protein (210-410 aa) is suitable for use in ELISA and Immunofluorescence research applications.
Applications	ELISA/IF
Host/Source	Mouse
Reactivity	PV

PRODUCT PROPERTIES

Clonality	Monoclonal
Clone ID	3H5
Concentration	
Conjugation	Unconjugated
Purification	Protein A purification
Dilution Range	ELISA-0.1 to 0.2 µg/ml; IF 0.5 to 20 µg/ml This is a conformational antibody and does not work in WB or other denaturative conditions. This antibody blocks E1-E2 dependent replication origin complex formation, dissociates protein/DNA complex and ther
Formulation	PBS with 50% glycerol
Isotype	IgG
Storage	Store at -20 or -70 °C upon receipt. Divide antibody into aliquots prior usage. Avoid multiple freeze-thaw cycles as product degradation may result.
Instruction	

TARGET INFORMATION

Gene ID	
Gene Symbol	
Uniprot ID	
Immunogen	210-410 aa
Immunogen Region	210-410 aa
Specificity	
Immunogen Sequence	



This product is suitable for in-vitro studies under the RESEARCH USE ONLY [RUO] licence. This product must not be used as for diagnostic or other medical purposes.
St John's Laboratory Ltd, Knowledge Dock Business Centre, University Way, London, E16 2RD | Tel: 0208 223 3081