

Anti-Papillomavirus type 1 E2-protein antibody (182-190 aa) [1E2] (STJA0002810)

STJA0002810

GENERAL INFORMATION

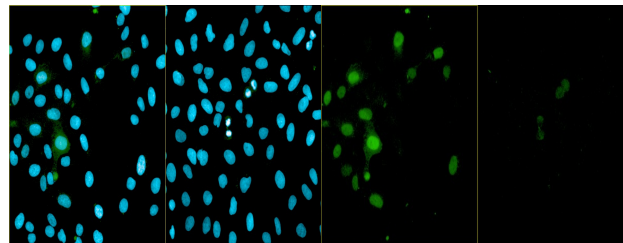
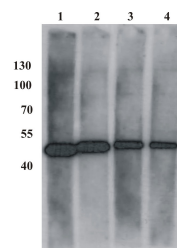
Product Type	Primary antibodies
Short Description	Mouse monoclonal antibody anti-Papillomavirus type 1 E2-protein (182-190 aa) is suitable for use in ELISA, Western Blot, Immunofluorescence and Immunoprecipitation research applications.
Applications	ELISA/WB/IF/IP
Host/Source	Mouse
Reactivity	PV

PRODUCT PROPERTIES

Clonality	Monoclonal
Clone ID	1E2
Concentration	
Conjugation	Unconjugated
Purification	Protein A purification
Dilution Range	ELISA 0.2 to 1 µg/ml; WB 0.5 to 2 µg/ml; IF 0.33 to 1 µg/ml Antibody working titer has to be established practically for each particular antigen and assay format
Formulation	PBS pH 7.4, 50% glycerole
Isotype	IgG
Storage	Store at -20 or -70 °C upon receipt. Divide antibody into aliquots prior usage. Avoid multiple freeze-thaw cycles as product degradation may result
Instruction	

TARGET INFORMATION

Gene ID	
Gene Symbol	
Uniprot ID	
Immunogen	182-190 aa
Immunogen Region	182-190 aa
Specificity	
Immunogen Sequence	



This product is suitable for in-vitro studies under the RESEARCH USE ONLY [RUO] licence. This product must not be used as for diagnostic or other medical purposes.
St John's Laboratory Ltd, Knowledge Dock Business Centre, University Way, London, E16 2RD | Tel: 0208 223 3081