

Anti-laminin Alpha 4 antibody [3H2] (STJA0002806)

STJA0002806

GENERAL INFORMATION

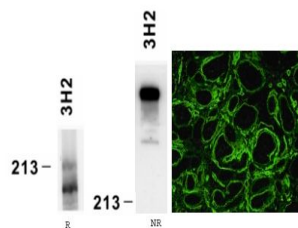
Product Type	Primary antibodies
Short Description	Mouse monoclonal antibody anti-Laminin Alpha 4 is suitable for use in ELISA, Immunohistochemistry, Western Blot and Immunoprecipitation research applications.
Applications	ELISA/IHC/WB/IP
Host/Source	Mouse
Reactivity	Human

PRODUCT PROPERTIES

Clonality	Monoclonal
Clone ID	3H2
Concentration	
Conjugation	Unconjugated
Purification	Protein G purification
Dilution Range	ELISA titer 0.02 µg/ml; WB, reduced conditions; 0.5 to 1 µg/ml; IP 0.5 mg/ml; IHC dilution 5 to 10 µg/ml Monoclonal antibody working titer has to be established practically for each particular antigen and assay format
Formulation	PBS pH 7.4, with 0.1% sodium azide
Isotype	IgG1
Storage	Store at -20 to -70 °C upon receipt. Divide antibody into aliquots prior usage. Avoid multiple freeze-thaw cycles
Instruction	

TARGET INFORMATION

Gene ID	3910
Gene Symbol	LAMA4
Uniprot ID	LAMA4_HUMAN
Immunogen	Immunoaffinity-purified Laminin 411 (laminin-8 (Alpha 4 Beta 1 Gamma 1) from platelets. Human laminin a4
Immunogen Region	
Specificity	Human laminin Alpha 4
Immunogen Sequence	



This product is suitable for in-vitro studies under the RESEARCH USE ONLY [RUO] licence. This product must not be used as for diagnostic or other medical purposes.
St John's Laboratory Ltd, Knowledge Dock Business Centre, University Way, London, E16 2RD | Tel: 0208 223 3081