

Anti-CD326/Epcam antibody [G8.8] {PE} (STJA0002005)

STJA0002005

GENERAL INFORMATION

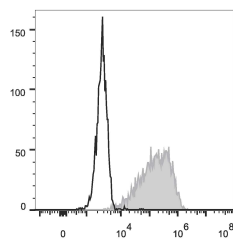
Product Type	Primary antibodies
Short Description	Rat monoclonal antibody anti-Epithelial cell adhesion molecule is suitable for use in Flow Cytometry research applications.
Applications	FC
Host/Source	Rat
Reactivity	Mouse

PRODUCT PROPERTIES

Clonality	Monoclonal
Clone ID	G8.8
Concentration	0.2 mg/mL
Conjugation	PE
Purification	
Dilution Range	
Formulation	Phosphate buffered solution, pH 7.2, containing 0.09% stabilizer and 1% protein protectant.
Isotype	IgG2ak
Storage Instruction	Recommend storing between 2-8°C and protecting from prolonged exposure to light. Do not freeze this product.

TARGET INFORMATION

Gene ID	17075
Gene Symbol	Epcam
Uniprot ID	EPCAM_MOUSE
Immunogen	
Immunogen Region	
Specificity	
Immunogen Sequence	



This product is suitable for in-vitro studies under the RESEARCH USE ONLY [RUO] licence. This product must not be used as for diagnostic or other medical purposes.
St John's Laboratory Ltd, Knowledge Dock Business Centre, University Way, London, E16 2RD | Tel: 0208 223 3081