

## Anti-CD10/MME antibody [CB-CALLA] {PE/Cyanine7} (STJA0000408)

STJA0000408

### GENERAL INFORMATION

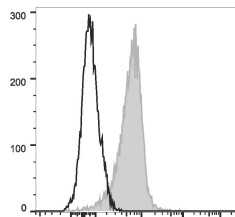
<b>Product Type</b>	Primary antibodies
<b>Short Description</b>	Mouse monoclonal antibody anti-Nepriylsin is suitable for use in Flow Cytometry research applications.
<b>Applications</b>	FC
<b>Host/Source</b>	Mouse
<b>Reactivity</b>	Human

### PRODUCT PROPERTIES

<b>Clonality</b>	Monoclonal
<b>Clone ID</b>	CB-CALLA
<b>Concentration</b>	5 Mu L/Test
<b>Conjugation</b>	PE/Cyanine7
<b>Purification</b>	
<b>Dilution Range</b>	
<b>Formulation</b>	Phosphate buffered solution, pH 7.2, containing 0.09% stabilizer and 1% protein protectant.
<b>Isotype</b>	IgG1k
<b>Storage Instruction</b>	Recommend storing between 2-8°C and protecting from prolonged exposure to light. Do not freeze this product.

### TARGET INFORMATION

<b>Gene ID</b>	<a href="#">4311</a>
<b>Gene Symbol</b>	<a href="#">MME</a>
<b>Uniprot ID</b>	<a href="#">NEP_HUMAN</a>
<b>Immunogen</b>	
<b>Immunogen Region</b>	
<b>Specificity</b>	
<b>Immunogen Sequence</b>	



Human peripheral blood granulocytes were stained with Anti-CD10 antibody (STJA0000408) (filled gray histogram). Unstained granulocytes (empty black histogram) were used as control.

This product is suitable for in-vitro studies under the RESEARCH USE ONLY [RUO] licence. This product must not be used as for diagnostic or other medical purposes.  
St John's Laboratory Ltd, Knowledge Dock Business Centre, University Way, London, E16 2RD | Tel: 0208 223 3081