

## Anti-CD3E antibody [OKT3] {PE} (STJA0000152)

STJA0000152

### GENERAL INFORMATION

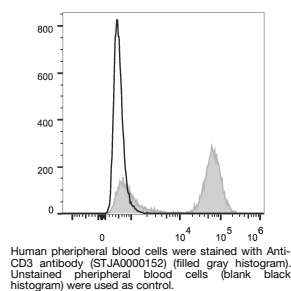
|                          |   |
|--------------------------|---|
| <b>Product Type</b>      | Primary antibodies  |
| <b>Short Description</b> | Mouse monoclonal antibody anti-T-cell surface glycoprotein CD3 epsilon chain is suitable for use in Flow Cytometry research applications. |
| <b>Applications</b>      | FC  |
| <b>Host/Source</b>       | Mouse   |
| <b>Reactivity</b>        | Human   |

### PRODUCT PROPERTIES

|                            |  |
|----------------------------|--|
| <b>Clonality</b>           | Monoclonal   |
| <b>Clone ID</b>            | OKT3   |
| <b>Concentration</b>       | 5 Mu L/Test  |
| <b>Conjugation</b>         | PE   |
| <b>Purification</b>        |  |
| <b>Dilution Range</b>      |  |
| <b>Formulation</b>         | Phosphate buffered solution, pH 7.2, containing 0.09% stabilizer and 1% protein protectant.                  |
| <b>Isotype</b>             | IgG2ak   |
| <b>Storage Instruction</b> | Recommend storing between 2-8°C and protecting from prolonged exposure to light. Do not freeze this product. |

### TARGET INFORMATION

|                         |            |
|-------------------------|------------|
| <b>Gene ID</b>          | 916        |
| <b>Gene Symbol</b>      | CD3E       |
| <b>Uniprot ID</b>       | CD3E_HUMAN |
| <b>Immunogen</b>        |            |
| <b>Immunogen Region</b> |            |
| <b>Specificity</b>      |            |
| <b>Immunogen</b>        |            |
| <b>Sequence</b>         |            |



This product is suitable for in-vitro studies under the RESEARCH USE ONLY [RUO] licence. This product must not be used as for diagnostic or other medical purposes.  
St John's Laboratory Ltd, Knowledge Dock Business Centre, University Way, London, E16 2RD | Tel: 0208 223 3081