

Anti-Adgre1 antibody [Cl:A3-1] {APC} (STJA0000124)

STJA0000124

GENERAL INFORMATION

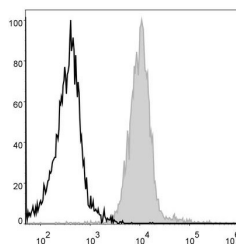
Product Type	Primary antibodies
Short Description	Rat monoclonal antibody anti-Adhesion G protein-coupled receptor E1 is suitable for use in Flow Cytometry research applications.
Applications	FC
Host/Source	Rat
Reactivity	Mouse

PRODUCT PROPERTIES

Clonality	Monoclonal
Clone ID	Cl:A3-1
Concentration	0.2 mg/mL
Conjugation	APC
Purification	
Dilution Range	
Formulation	Phosphate buffered solution, pH 7.2, containing 0.09% stabilizer and 1% protein protectant.
Isotype	IgG2bk
Storage Instruction	Recommend storing between 2-8°C and protecting from prolonged exposure to light. Do not freeze this product.

TARGET INFORMATION

Gene ID	13733
Gene Symbol	Adgre1
Uniprot ID	AGRE1_MOUSE
Immunogen	
Immunogen Region	
Specificity	
Immunogen Sequence	



Mouse abdominal macrophages elicited by starch broth were stained with Anti-F4/80 antibody (STJA0000124) [Used at 0.2 μ g/ 10^5 cells dilution] (filled gray histogram). Unstained macrophages (black line histogram) were used as control.

This product is suitable for in-vitro studies under the RESEARCH USE ONLY [RUO] licence. This product must not be used as for diagnostic or other medical purposes.
St John's Laboratory Ltd, Knowledge Dock Business Centre, University Way, London, E16 2RD | Tel: 0208 223 3081