

## Anti-Adgre1 antibody [Cl:A3-1] {AF488} (STJA0000120)

STJA0000120

### GENERAL INFORMATION

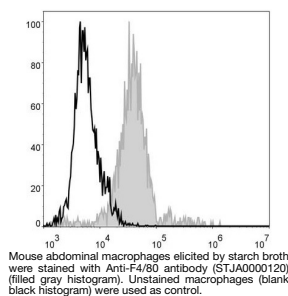
<b>Product Type</b>	Primary antibodies
<b>Short Description</b>	Rat monoclonal antibody anti-Adhesion G protein-coupled receptor E1 is suitable for use in Flow Cytometry research applications.
<b>Applications</b>	FC
<b>Host/Source</b>	Rat
<b>Reactivity</b>	Mouse

### PRODUCT PROPERTIES

<b>Clonality</b>	Monoclonal
<b>Clone ID</b>	Cl:A3-1
<b>Concentration</b>	5 µg L/Test
<b>Conjugation</b>	AF488
<b>Purification</b>	
<b>Dilution Range</b>	
<b>Formulation</b>	Phosphate buffered solution, pH 7.2, containing 0.09% stabilizer and 1% protein protectant.
<b>Isotype</b>	IgG2bk
<b>Storage Instruction</b>	Recommend storing between 2-8°C and protecting from prolonged exposure to light. Do not freeze this product.

### TARGET INFORMATION

<b>Gene ID</b>	13733
<b>Gene Symbol</b>	Adgre1
<b>Uniprot ID</b>	AGRE1_MOUSE
<b>Immunogen</b>	
<b>Immunogen Region</b>	
<b>Specificity</b>	
<b>Immunogen Sequence</b>	



This product is suitable for in-vitro studies under the RESEARCH USE ONLY [RUO] licence. This product must not be used as for diagnostic or other medical purposes.  
St John's Laboratory Ltd, Knowledge Dock Business Centre, University Way, London, E16 2RD | Tel: 0208 223 3081