

## Anti-Klrb1c antibody [PK136] {AF488} (STJA0000042)

STJA0000042

### GENERAL INFORMATION

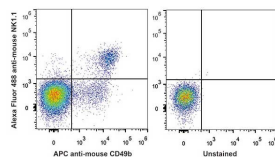
<b>Product Type</b>	Primary antibodies
<b>Short Description</b>	Mouse monoclonal antibody anti-Killer cell lectin-like receptor subfamily B member 1C is suitable for use in Flow Cytometry research applications.
<b>Applications</b>	FC
<b>Host/Source</b>	Mouse
<b>Reactivity</b>	Mouse

### PRODUCT PROPERTIES

<b>Clonality</b>	Monoclonal
<b>Clone ID</b>	PK136
<b>Concentration</b>	0.5 mg/mL
<b>Conjugation</b>	AF488
<b>Purification</b>	
<b>Dilution Range</b>	
<b>Formulation</b>	Phosphate buffered solution, pH 7.2, containing 0.09% stabilizer and 1% protein protectant.
<b>Isotype</b>	IgG2ak
<b>Storage Instruction</b>	Recommend storing between 2-8°C and protecting from prolonged exposure to light. Do not freeze this product.

### TARGET INFORMATION

<b>Gene ID</b>	17059
<b>Gene Symbol</b>	Klrb1c
<b>Uniprot ID</b>	KLRBC_MOUSE
<b>Immunogen</b>	
<b>Immunogen</b>	
<b>Region</b>	
<b>Specificity</b>	
<b>Immunogen</b>	
<b>Sequence</b>	



C57BL/6 murine splenocytes were stained with Anti-CD161/NK1.1 antibody (STJA0000042) [Used at 0.2  $\mu$ g/10<sup>6</sup> cells dilution] and Anti-Mouse CD49b Monoclonal Antibody (APC Conjugated). Unstained splenocytes were used as control (Right).

This product is suitable for in-vitro studies under the RESEARCH USE ONLY [RUO] licence. This product must not be used as for diagnostic or other medical purposes.  
St John's Laboratory Ltd, Knowledge Dock Business Centre, University Way, London, E16 2RD | Tel: 0208 223 3081