

Anti-Klr1c antibody [PK136] {PE/Cyanine5} (STJA0000039)

STJA0000039

GENERAL INFORMATION

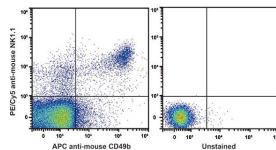
Product Type	Primary antibodies
Short Description	Mouse monoclonal antibody anti-Killer cell lectin-like receptor subfamily B member 1C is suitable for use in Flow Cytometry research applications.
Applications	FC
Host/Source	Mouse
Reactivity	Mouse

PRODUCT PROPERTIES

Clonality	Monoclonal
Clone ID	PK136
Concentration	0.2 mg/mL
Conjugation	PE/Cyanine5
Purification	
Dilution Range	
Formulation	Phosphate buffered solution, pH 7.2, containing 0.09% stabilizer and 1% protein protectant.
Isotype	IgG2ak
Storage Instruction	Recommend storing between 2-8°C and protecting from prolonged exposure to light. Do not freeze this product.

TARGET INFORMATION

Gene ID	17059
Gene Symbol	Klr1c
Uniprot ID	KLRBC_MOUSE
Immunogen	
Immunogen	
Region	
Specificity	
Immunogen	
Sequence	



C57BL/6 murine splenocytes were stained with Anti-CD161/NK1.1 antibody (STJA0000039) [Used at 0.2 μ g/10⁶ cells dilution] and Anti-Mouse CD49b Monoclonal Antibody (APC Conjugated). Unstained splenocytes were used as control (Right).

This product is suitable for in-vitro studies under the RESEARCH USE ONLY [RUO] licence. This product must not be used as for diagnostic or other medical purposes.
St John's Laboratory Ltd, Knowledge Dock Business Centre, University Way, London, E16 2RD | Tel: 0208 223 3081